

SPHERE SPORT FABRIC BOOK

 www.sphere-sports.com

 hello@sphere-sports.com

 No. 66 Weijian Road Industrial Area, Dongguan, China

 (+86) 769-2360-5821

Follow Us:



TABLE OF CONTENTS

Sublimation

SP-001 Evaporex Eyelet Mesh Fabric	02	SP-022 100D Woven Fabric	21
SP-002 Evaporex Eyelet Mesh Fabric	03	SP-023 Tyslon Fabric	22
SP-003 Evaporex Eyelet Mesh Fabric	04	SP-027 4D Stretch Fiscale Fabric	23
SP-004 Interlock Fabric	05	SP-028 KW14 Corded Knitted Fabric	24
SP-005 Supreme Mesh Fabric	06	SP-030 Polytwill Fabric	25
SP-006 Tartan Mesh Fabric	07	SP-031 Hoodie Fleece Fabric	26
SP-007 A-line Mesh Fabric	08	SP-032 Towel Fabric	27
SP-008 Evaporex Fabric	09	SP-035 Nitro Mesh	28
SP-009 UA (Under Armour) Fabric	10	SP-036 Coolpass Fabric	29
SP-010 Repreve Recycled Nano	11	SP-044 Cricket Pants Fabric	30
Pique Fabric		SP-050 Deluxe Hoodie Fabric	31
SP-011 Ultra Mesh Fabric	12	SP-054 Hawaiian Shirt Woven Cotton	32
SP-012 Butterfly Mesh Fabric	13	Fabric with Digital Printing	
SP-014 Star Mesh Fabric	14	SP-055 210T Fabric	33
SP-015 Peach Skin Fabric	15	SP-057 Miniwaffle Fabric	34
SP-016 Hydrotek Fabric	16	SP-058 Exodry/Cooldry Fabric	35
SP-017 Hydrotek Fabric	17	SP-059 SPF50+ Chlorine Resistant Fabric	36
SP-019 Lycra Fabric	18	SP-061 Stretchy Single Jersey Fabric	37
SP-020 7327 Yoga Fabric	19	SP-067 Fila Golf Skirt Fabric	38
SP-021 75D Woven Fabric	20		



SKU: SP-001

Evaporex Eyelet Mesh Fabric

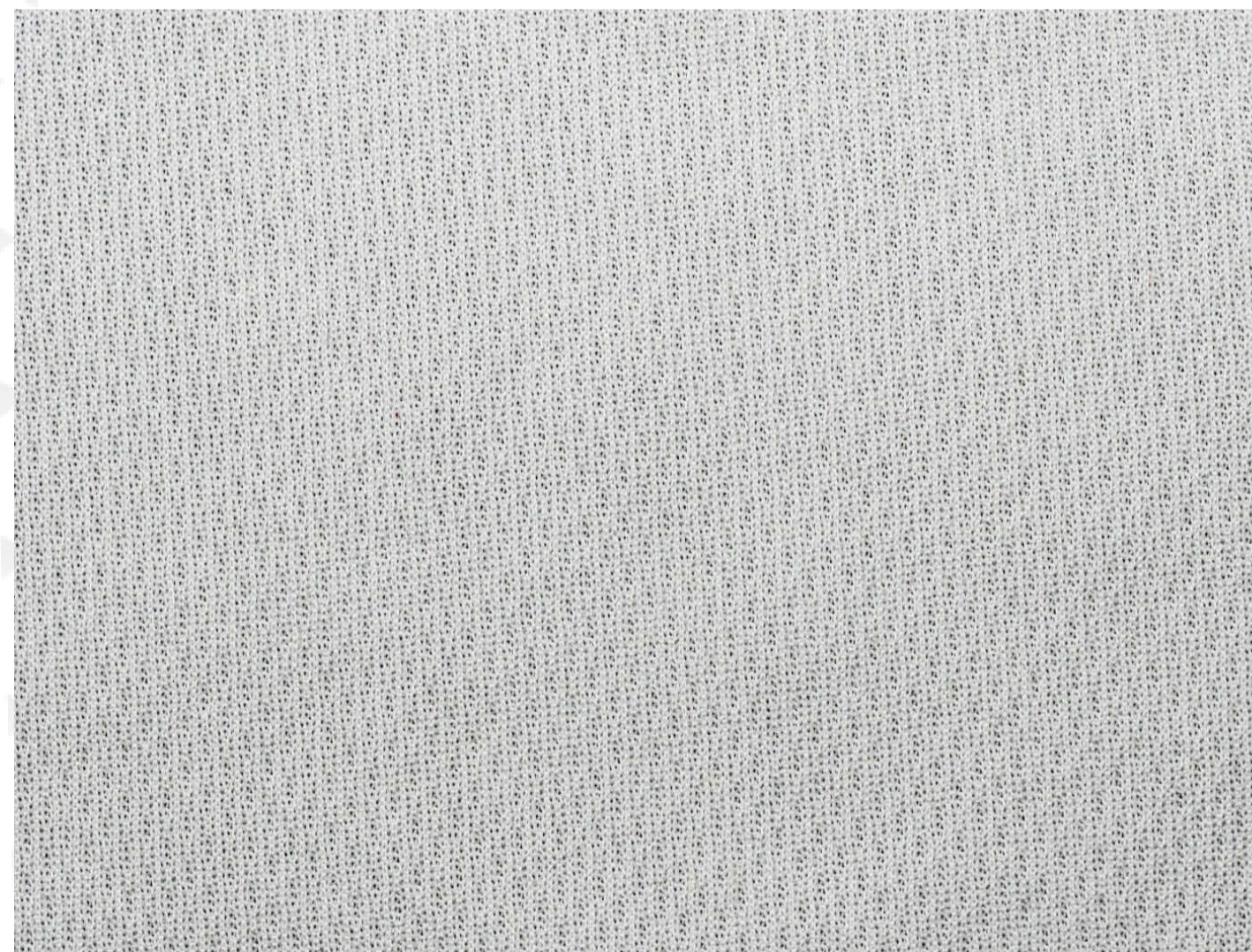
Print Type: **Sublimation**

Weight: **100gsm**

Material Composition: **100% polyester**

Fabric Use:

- Reversible Singlet
- Reversible T-shirt





SKU: SP-002

Evaporex Eyelet Mesh Fabric

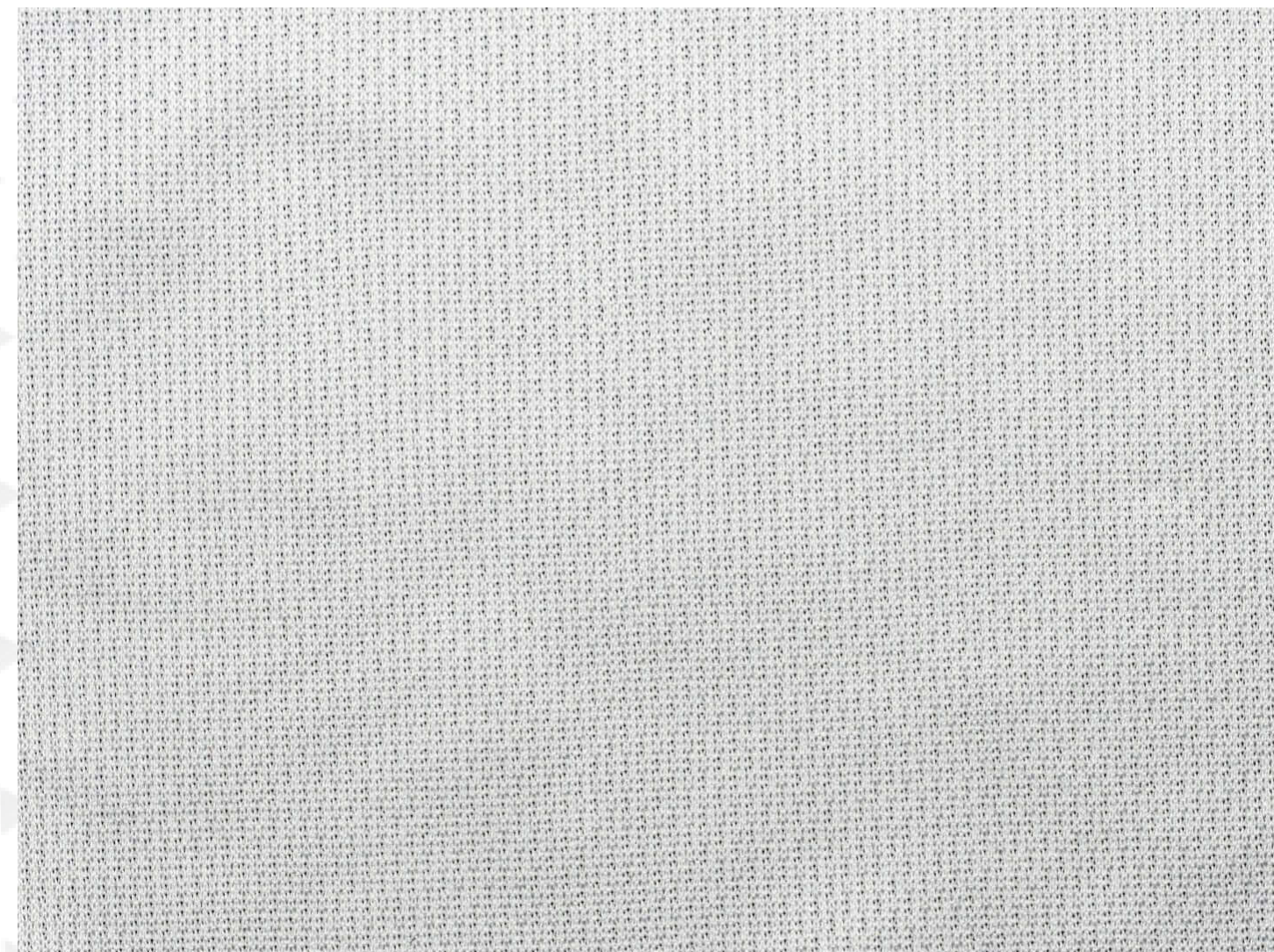
Print Type: **Sublimation**

Weight: **150gsm**

Material Composition: **100% polyester**

Fabric Use:

- Singlet
- T-shirt
- Polo
- Netball Dress
- Shorts





SKU: SP-003

Evaporex Eyelet Mesh Fabric

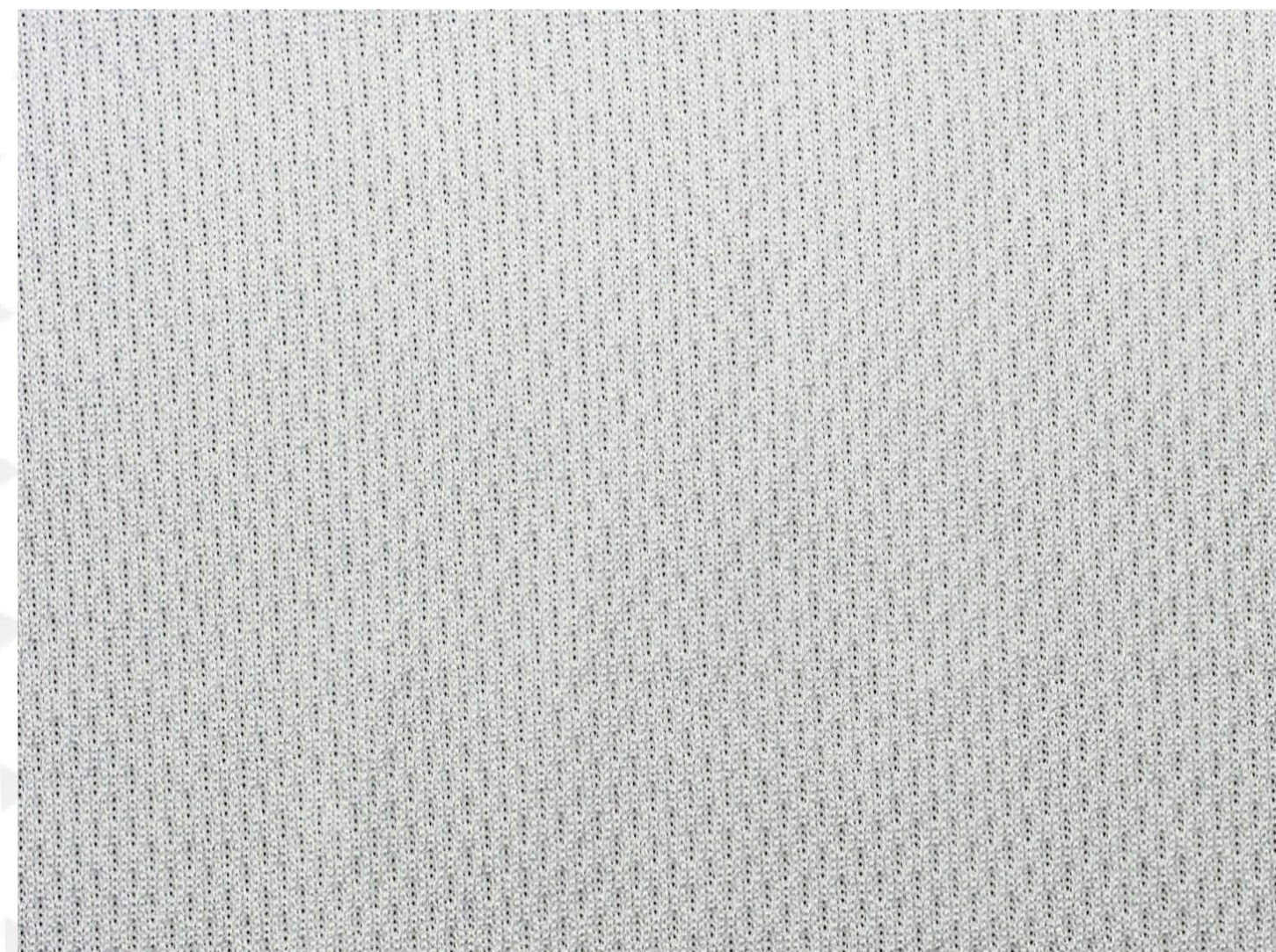
Print Type: **Sublimation**

Weight: **160gsm**

Material Composition: **100% polyester**

Fabric Use:

- Singlet
- Netball Dress
- Soccer Jersey
- T-shirt
- Shorts
- Polo
- Basketball Jersey





SKU: SP-004

Interlock Fabric

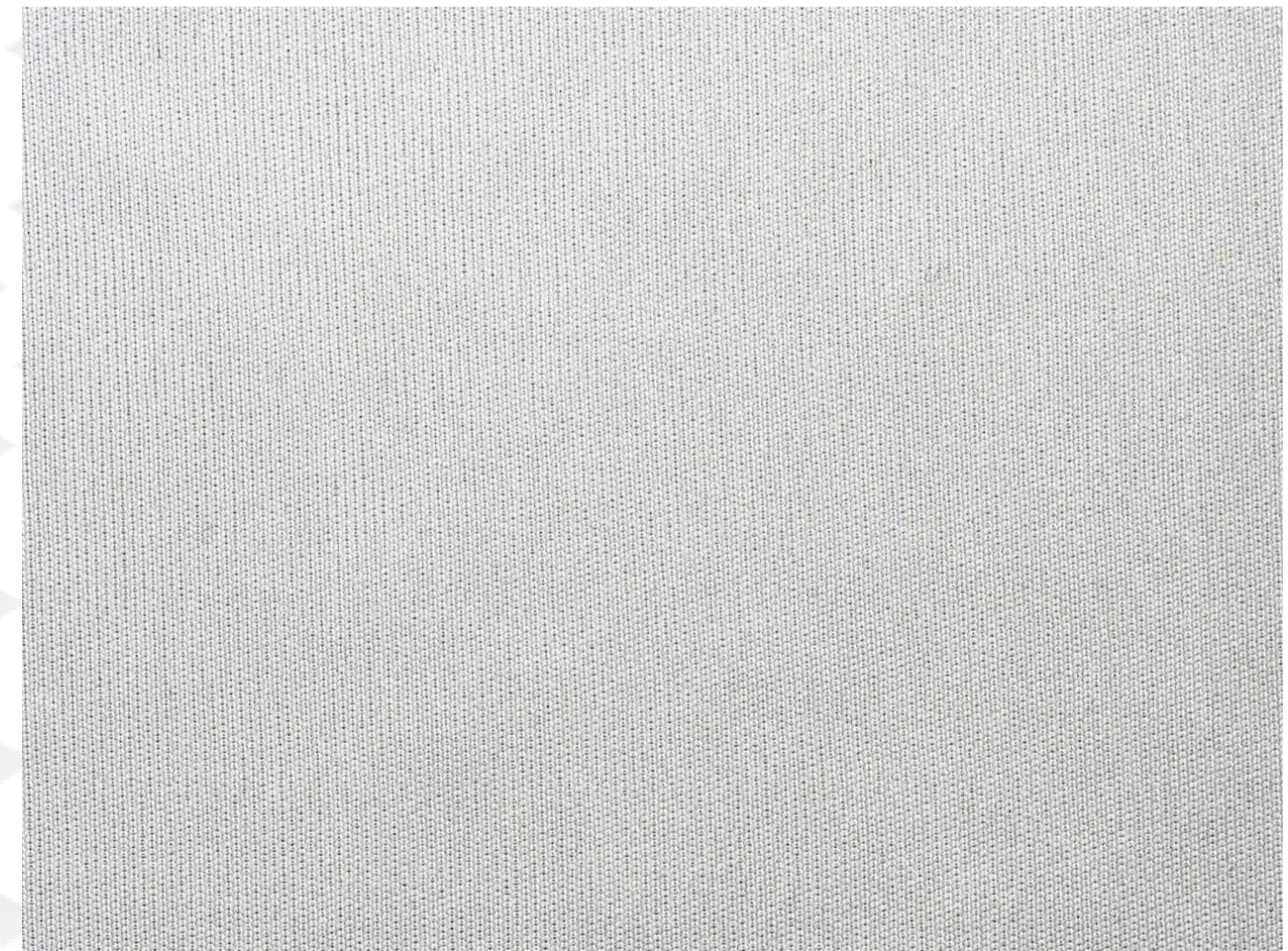
Print Type: **Sublimation**

Weight: **140gsm, 160gsm, 180 gsm, 200 gsm**

Material Composition: **100% polyester**

Fabric Use:

- Singlet
- Netball Dress
- Soccer Jersey
- T-shirt
- Shorts
- Polo
- Basketball Jersey



SKU: SP-005

Supreme Mesh Fabric

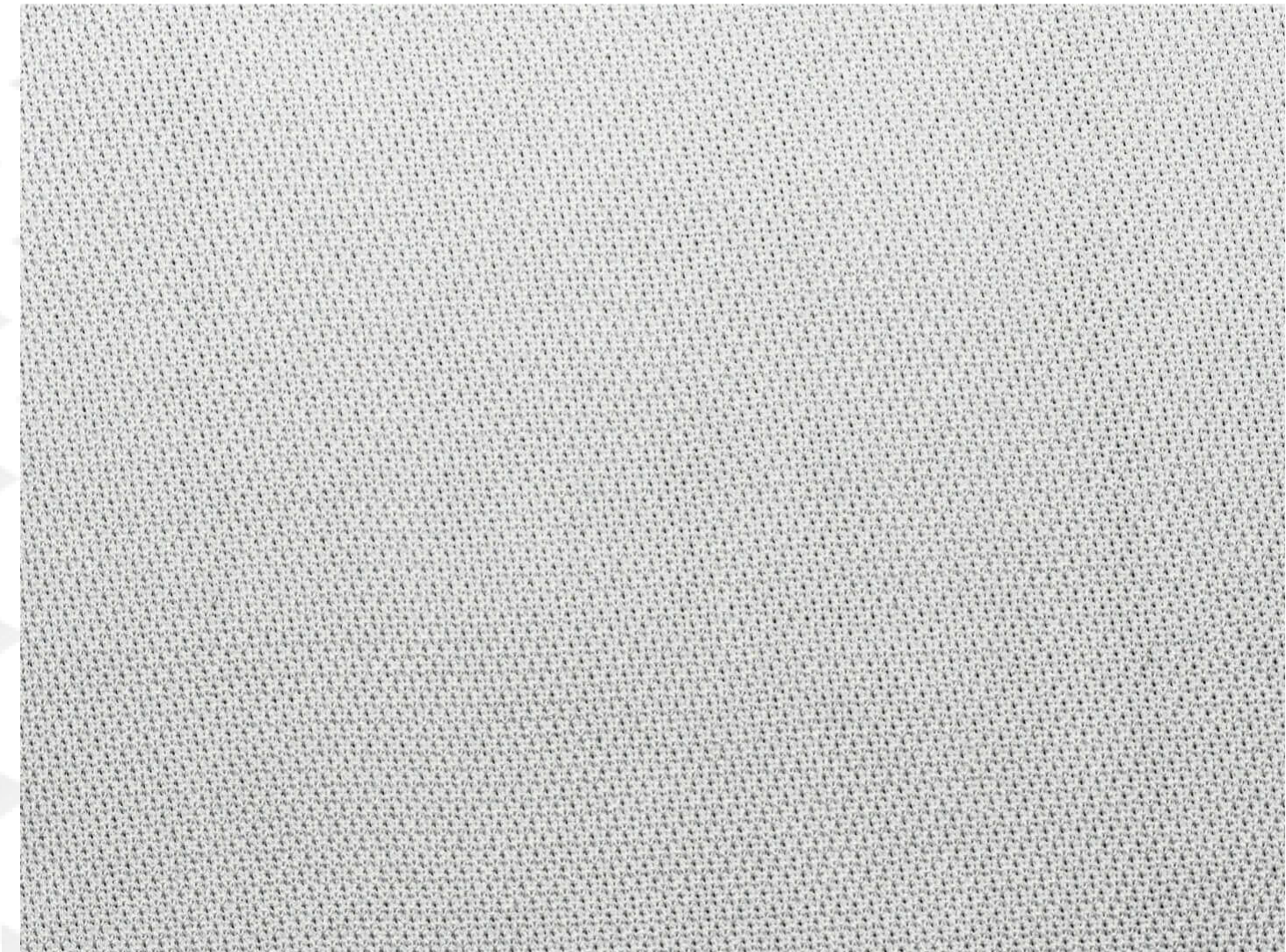
Print Type: **Sublimation**

Weight: **160gsm**

Material Composition: **100% polyester**

Fabric Use:

- Singlet
- T-shirt
- Polo
- Netball Dress
- Shorts
- Basketball Jersey
- Soccer Jersey
- Cricket Jersey





SKU: SP-006

Tartan Mesh Fabric

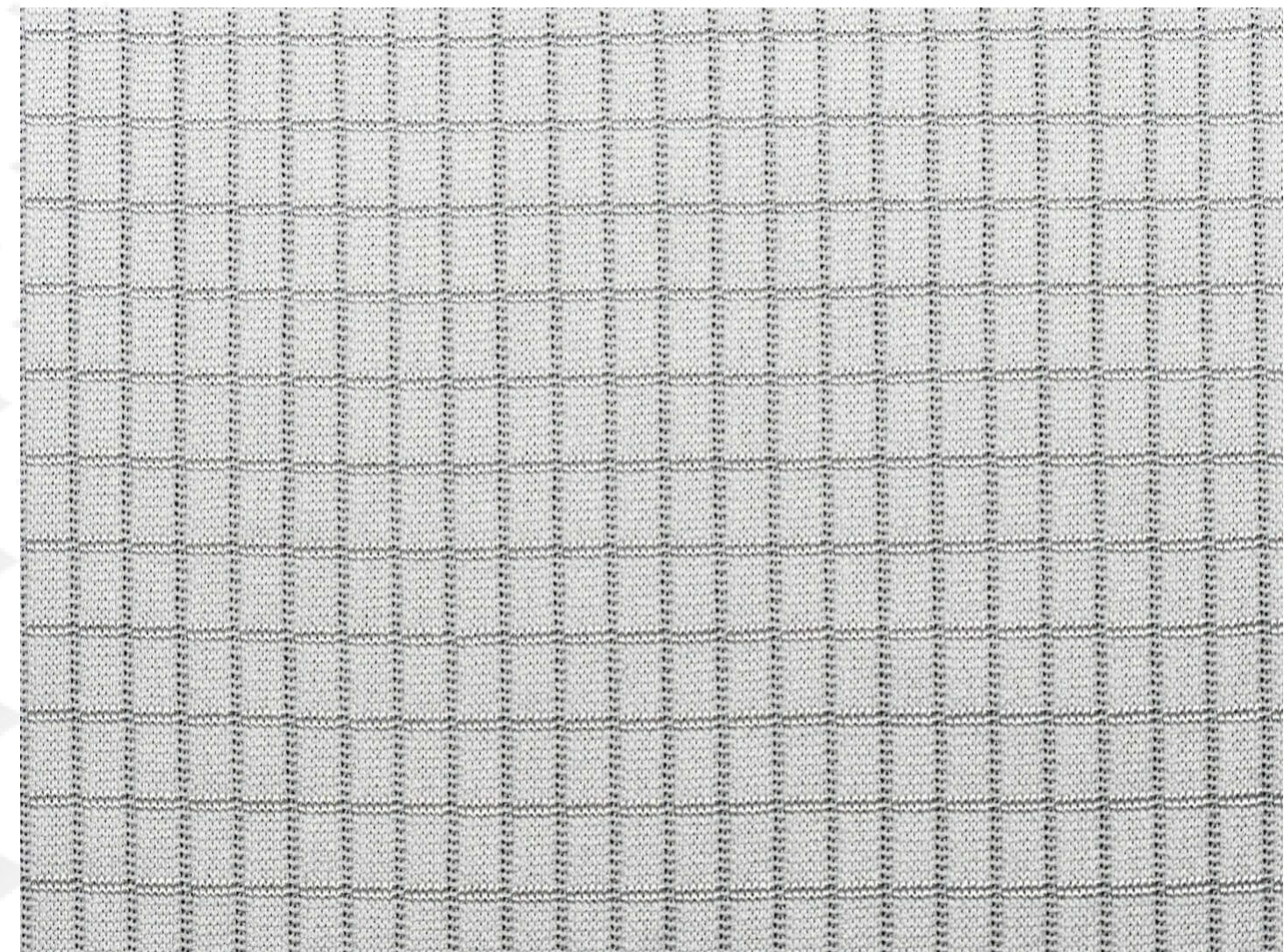
Print Type: **Sublimation**

Weight: **160gsm**

Material Composition: **100% polyester**

Fabric Use:

- T-shirt
- Polo
- Shorts
- Singlet





SKU: SP-007

A-Line Mesh Fabric

Print Type: **Sublimation**

Weight: **140gsm**

Material Composition: **100% polyester**

Fabric Use:

- Singlet
- T-shirt
- Polo
- Netball Dress
- Shorts



SKU: SP-008

Evaporex Fabric

Print Type: **Sublimation**

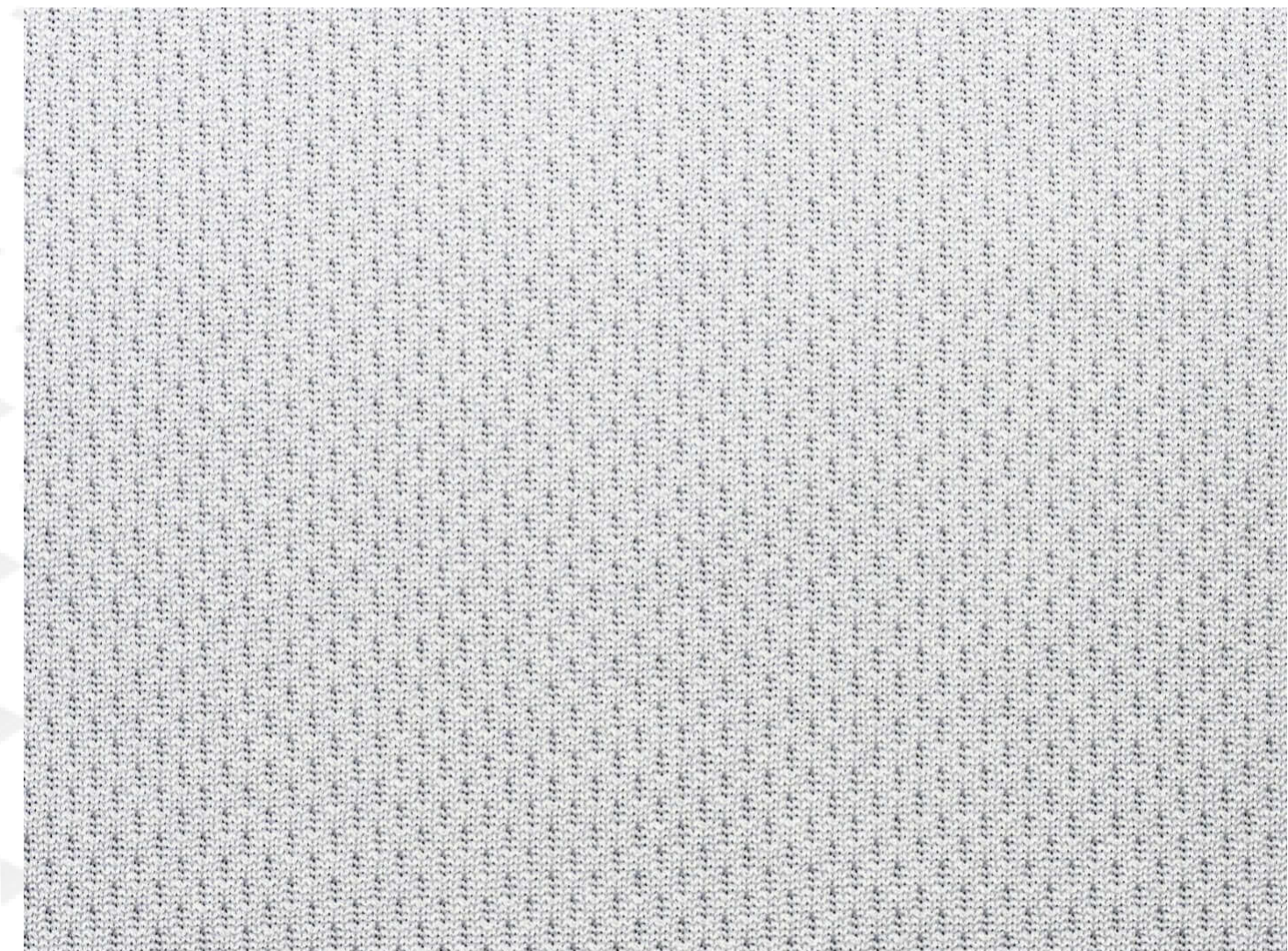
Weight: **200gsm**

Material Composition: **100% polyester**

Fabric Use:

• **Baseball Top**

• **Pants**



SKU: SP-009

UA (Under Armour) Fabric

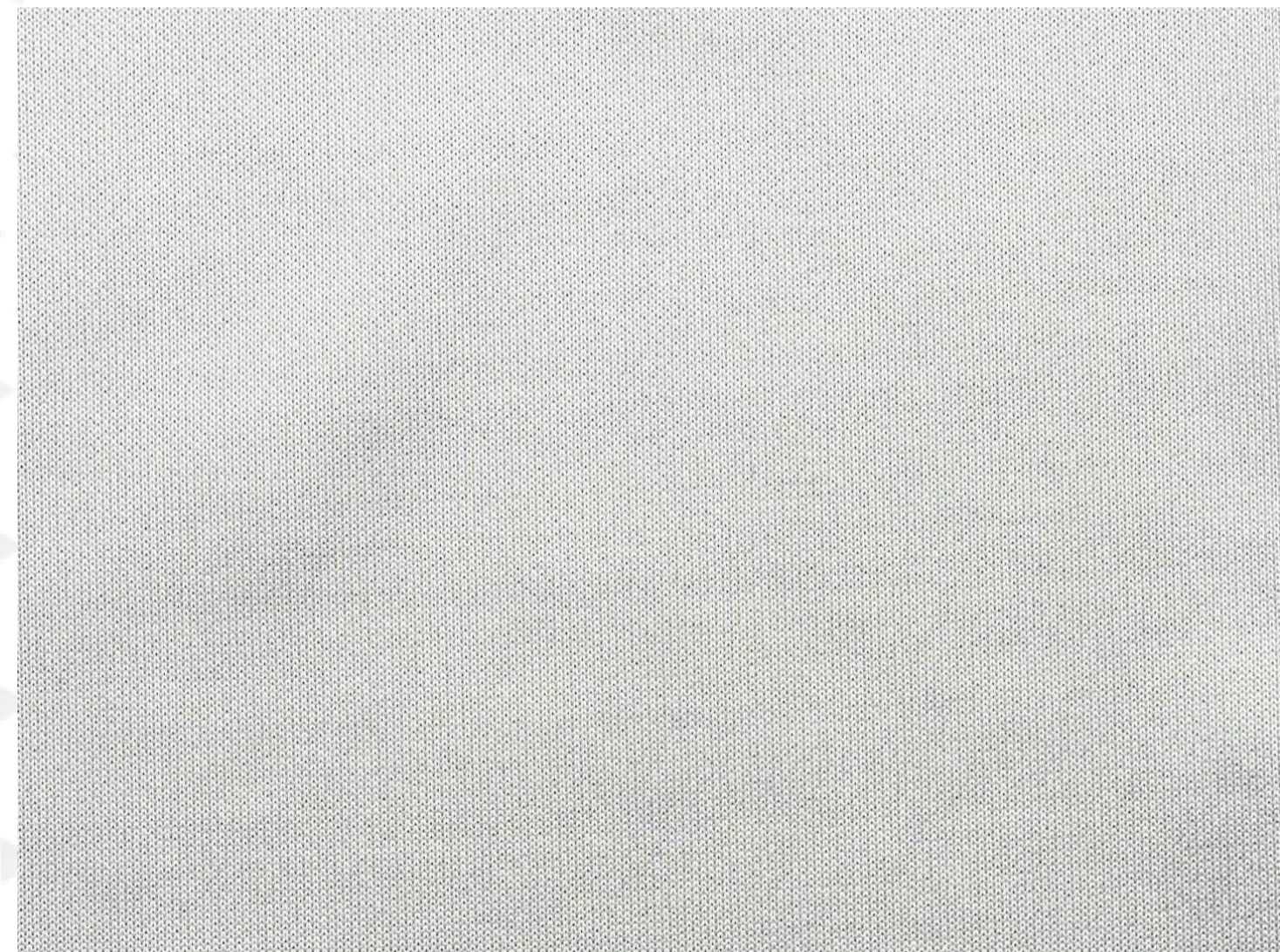
Print Type: **Sublimation**

Weight: **170gsm**

Material Composition: **92% polyester 8% spandex**

Fabric Use:

- **Polo**
- **T-shirt**





SKU: SP-010

Repreve Recycled Nano Pique Fabric

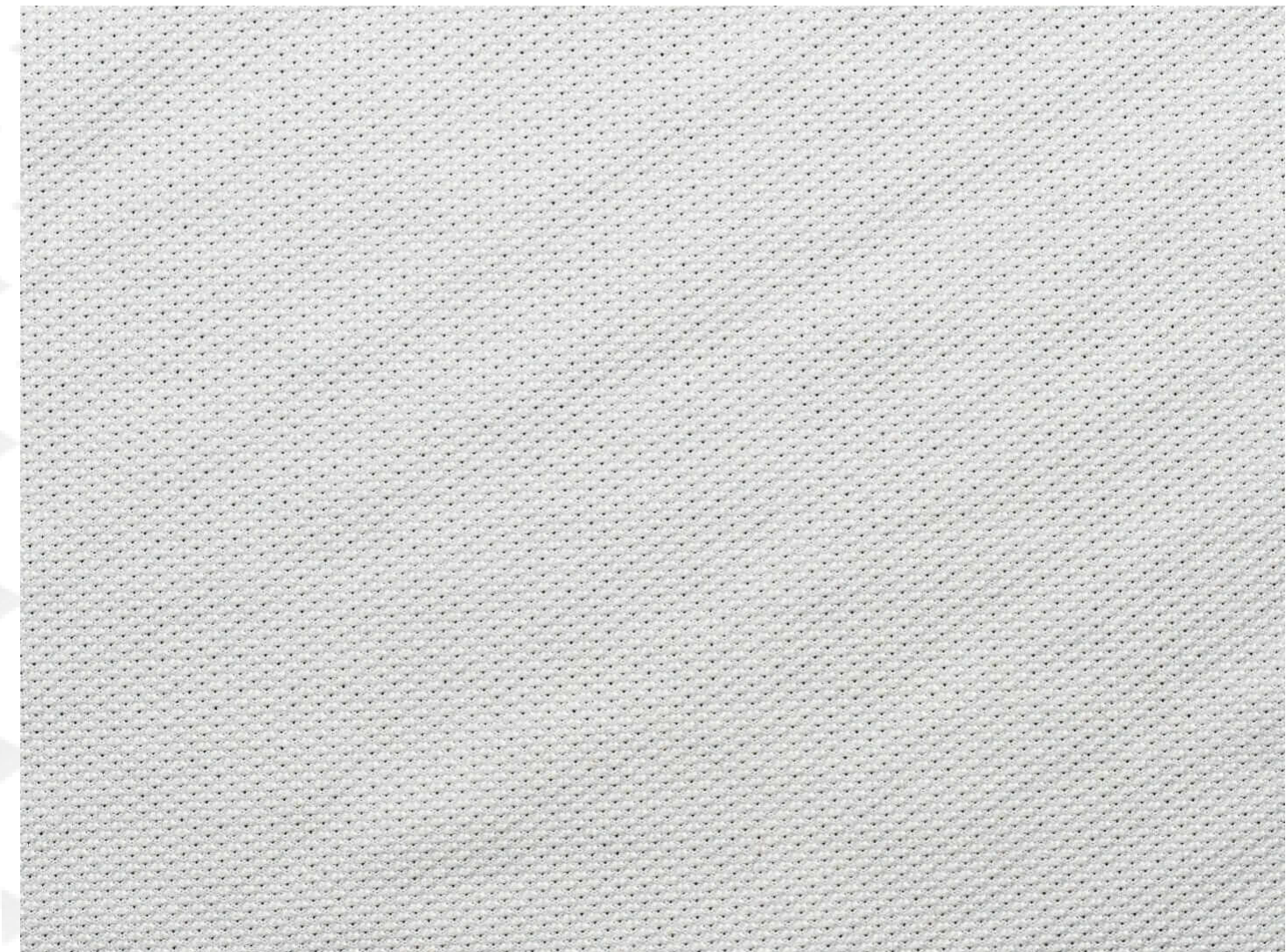
Print Type: **Sublimation**

Weight: **160gsm**

Material Composition: **92% polyester 8% spandex**

Fabric Use:

- Singlet
- T-shirt
- Polo
- Netball Dress
- Cricket Top
- Pants





SKU: SP-011

Ultra Mesh Fabric

Print Type: **Sublimation**

Weight: **150gsm**

Material Composition: **100% polyester**

Fabric Use:

- Singlet
- T-shirt
- Basketball Jersey
- Baseball Jersey
- Softball Jersey





SKU: SP-012

Butterfly Mesh Fabric

Print Type: **Sublimation**

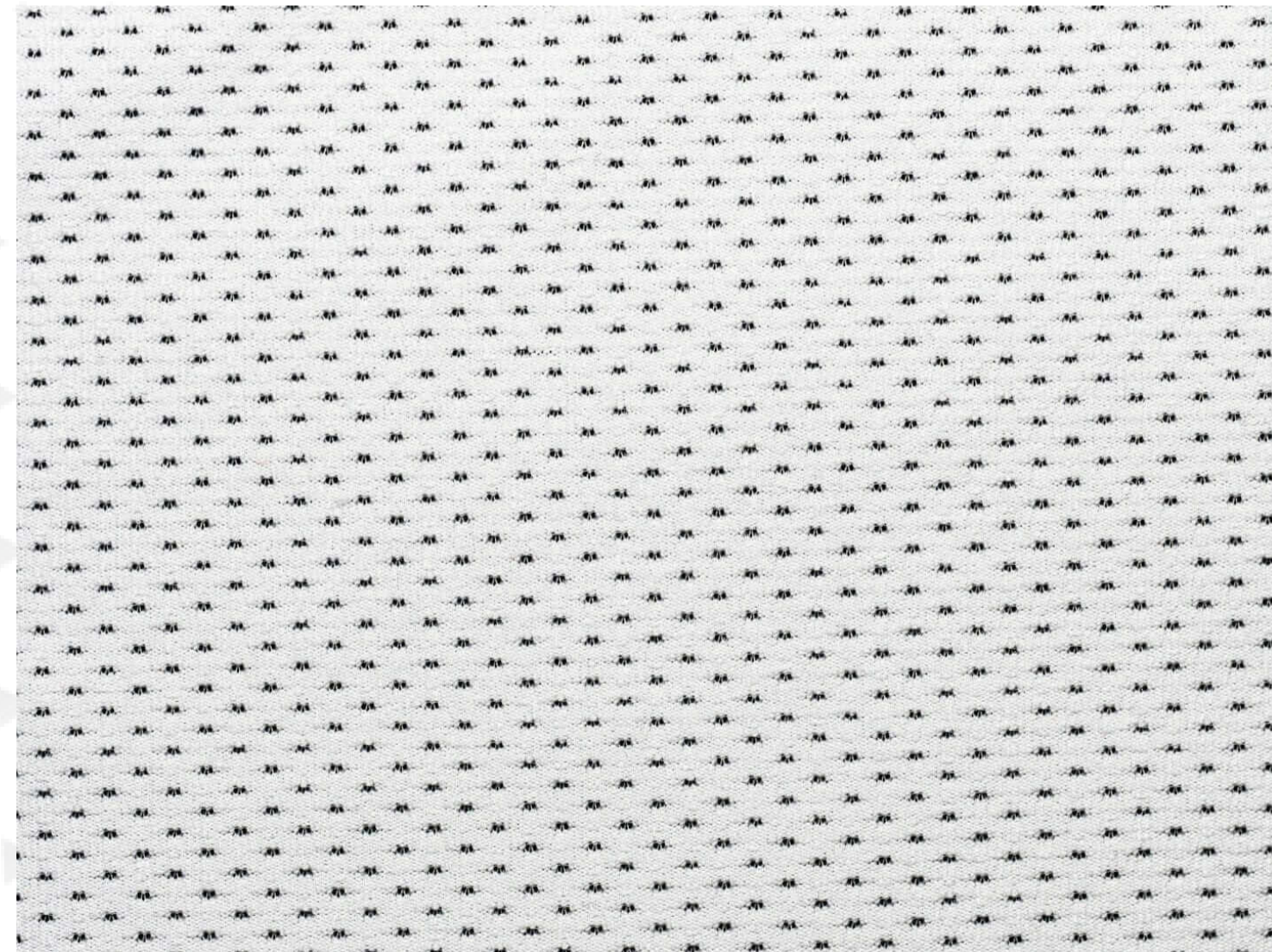
Weight: **180gsm**

Material Composition: **90% polyester 10% spandex**

Fabric Use:

• **Cycling Jersey**

• **Side Panel**



SKU: SP-014

Star Mesh Fabric

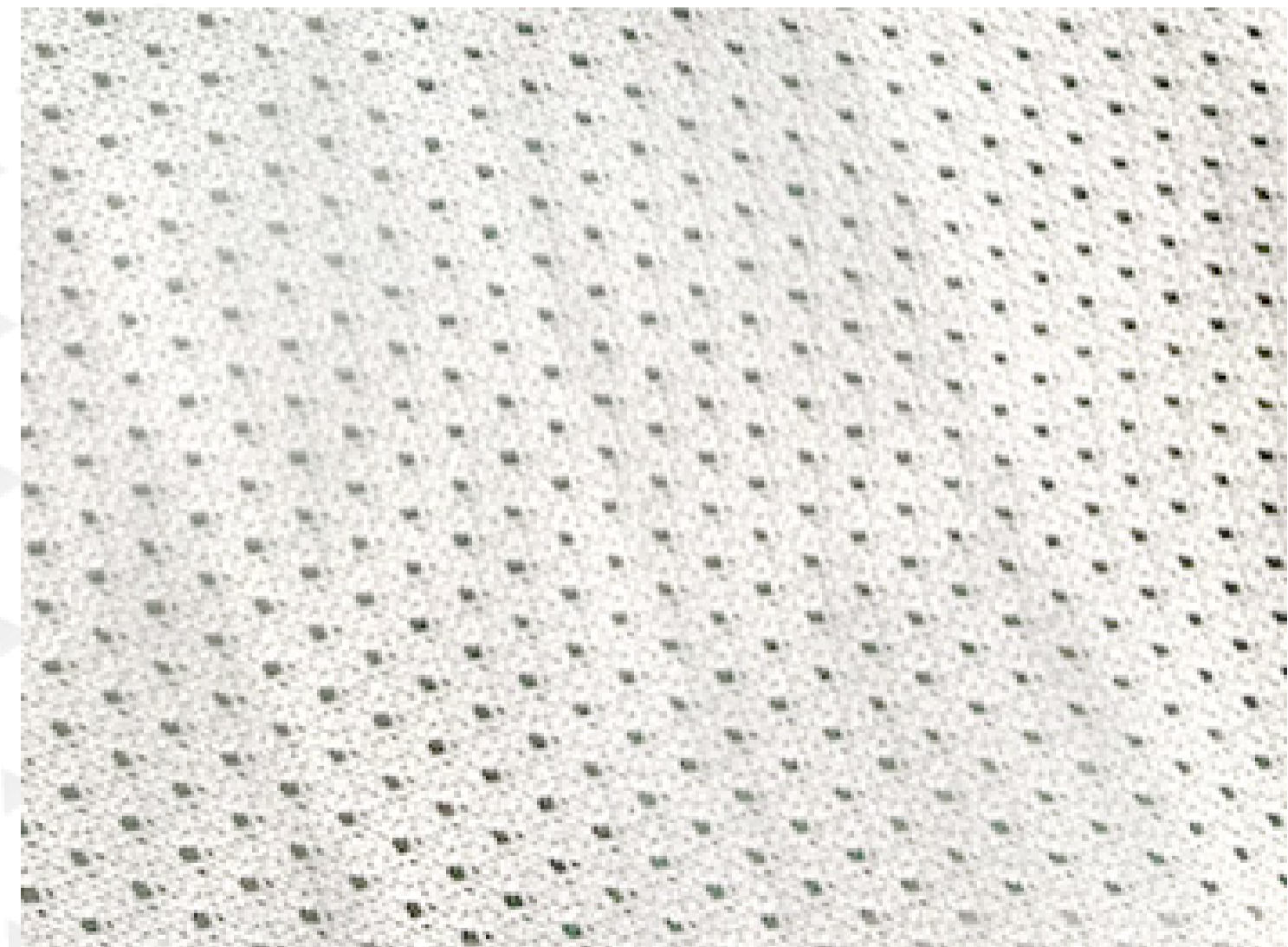
Print Type: **Sublimation**

Weight: **80gsm**

Material Composition: **100% polyester**

Fabric Use:

- **Lining**
- **Bibs**





SKU: SP-015

Peach Skin Fabric

Print Type: **Sublimation**

Weight: **130gsm**

Material Composition: **100% polyester**

Fabric Use:

- **Jacket**
- **Beach Shorts**



SKU: SP-016

Hydrotek Fabric

Print Type: **Sublimation**

Weight: **200gsm**

Material Composition: **100% polyester**

Fabric Use:

- **AFL Shorts**
- **Rugby Shorts**





SKU: SP-017

Hydrotek Fabric

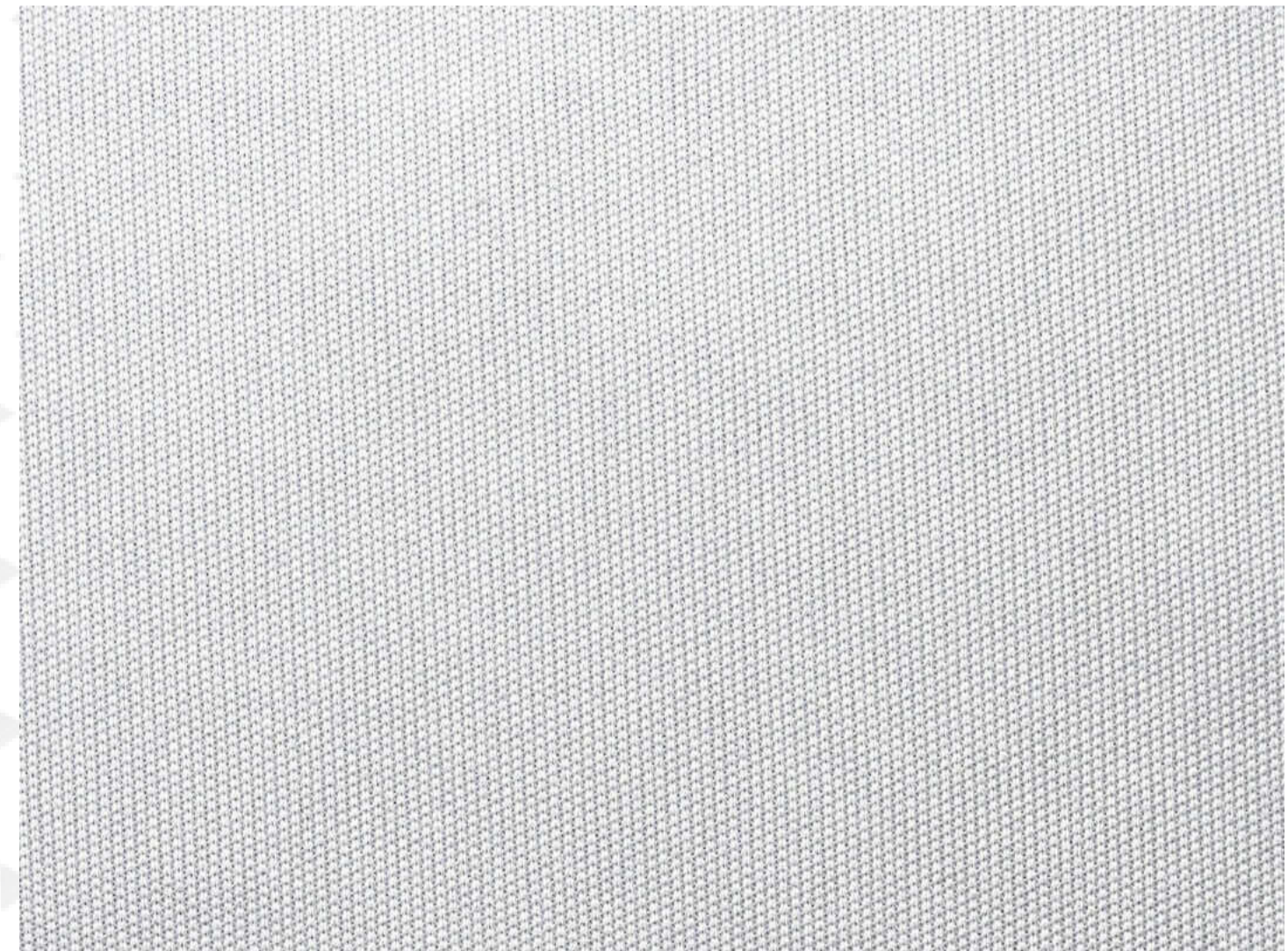
Print Type: **Sublimation**

Weight: **260gsm**

Material Composition: **100% polyester**

Fabric Use:

- **AFL Shorts**
- **Rugby Shorts**





SKU: SP-019

Lycra Fabric

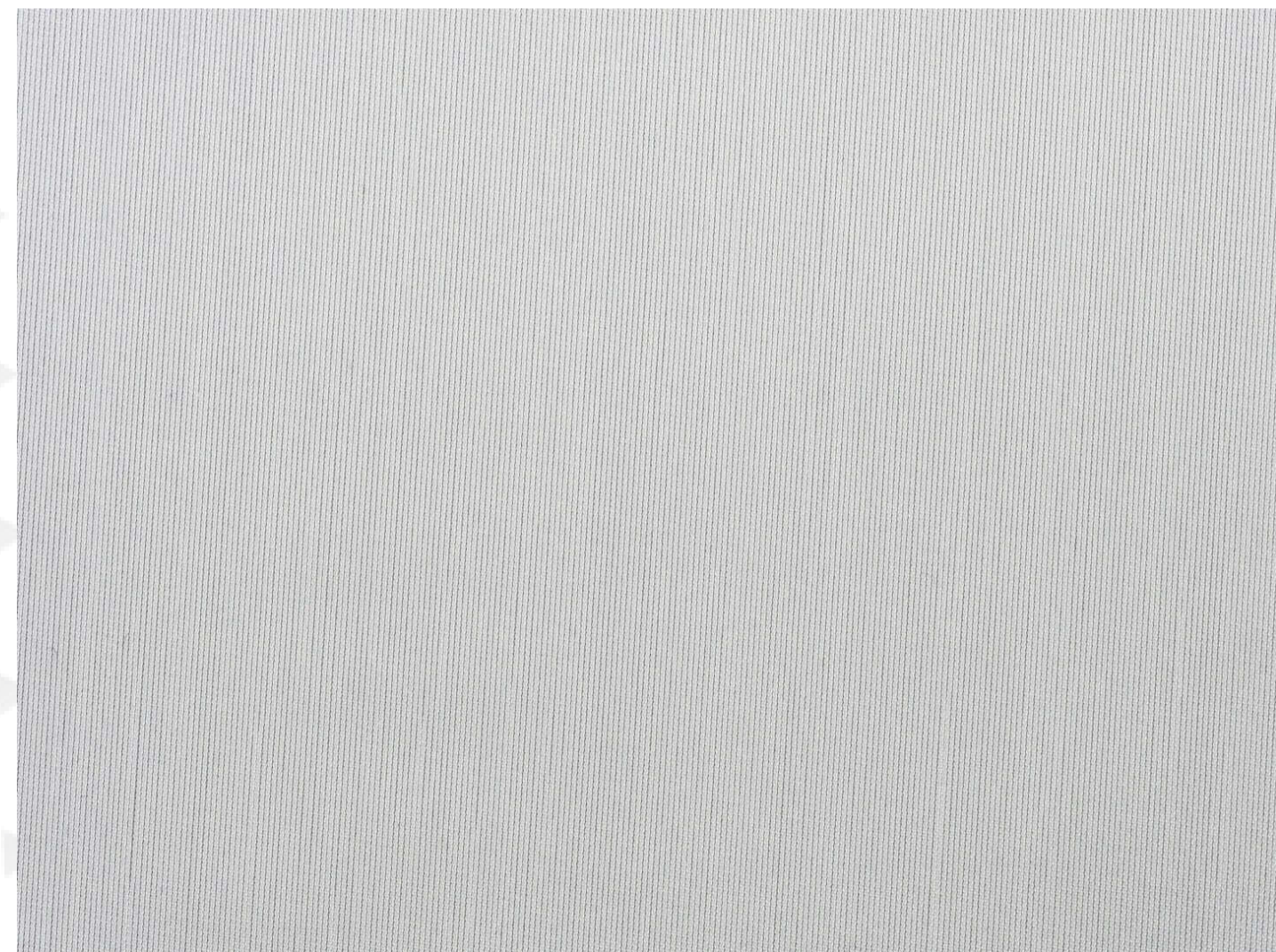
Print Type: **Sublimation**

Weight: **250gsm**

Material Composition: **82% polyester 18% spandex**

Fabric Use:

- Speedo
- Swimwear
- Rush Top
- Rush Guard
- Panel





SKU: SP-020

7327 Yoga Sublimation Fabric

Print Type: **Sublimation**

Weight: **230gsm**

Material Composition: **73% polyester 27% spandex**

Fabric Use:

- Yoga Uniform
- Leggings
- Tights





SKU: **SP-021**

75D Woven Fabric

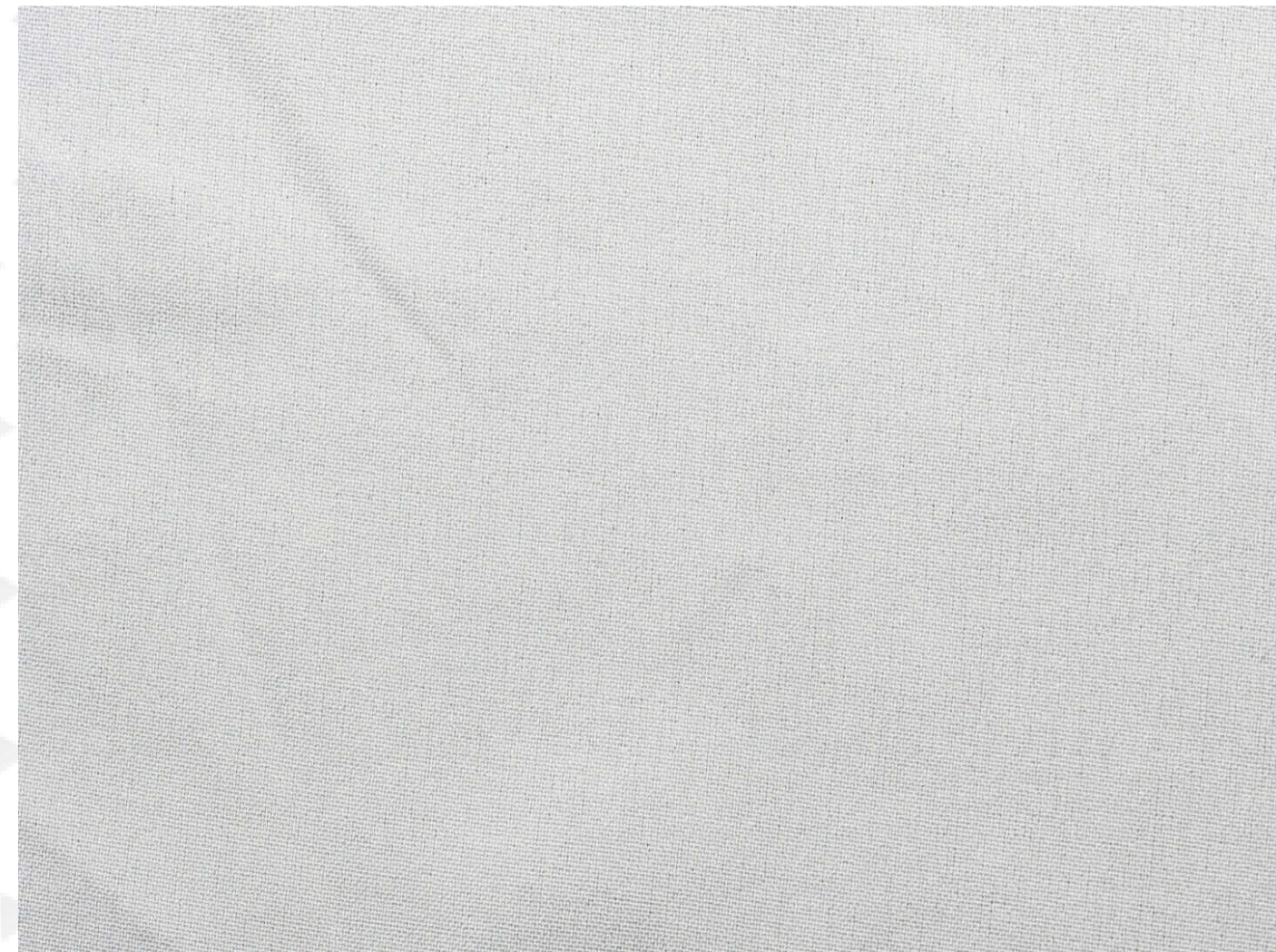
Print Type: **Sublimation**

Weight: **110gsm**

Material Composition: **95% polyester 5% spandex**

Fabric Use:

- **Running Shorts**
- **Travel Shorts**





SKU: SP-022

100D Woven Fabric

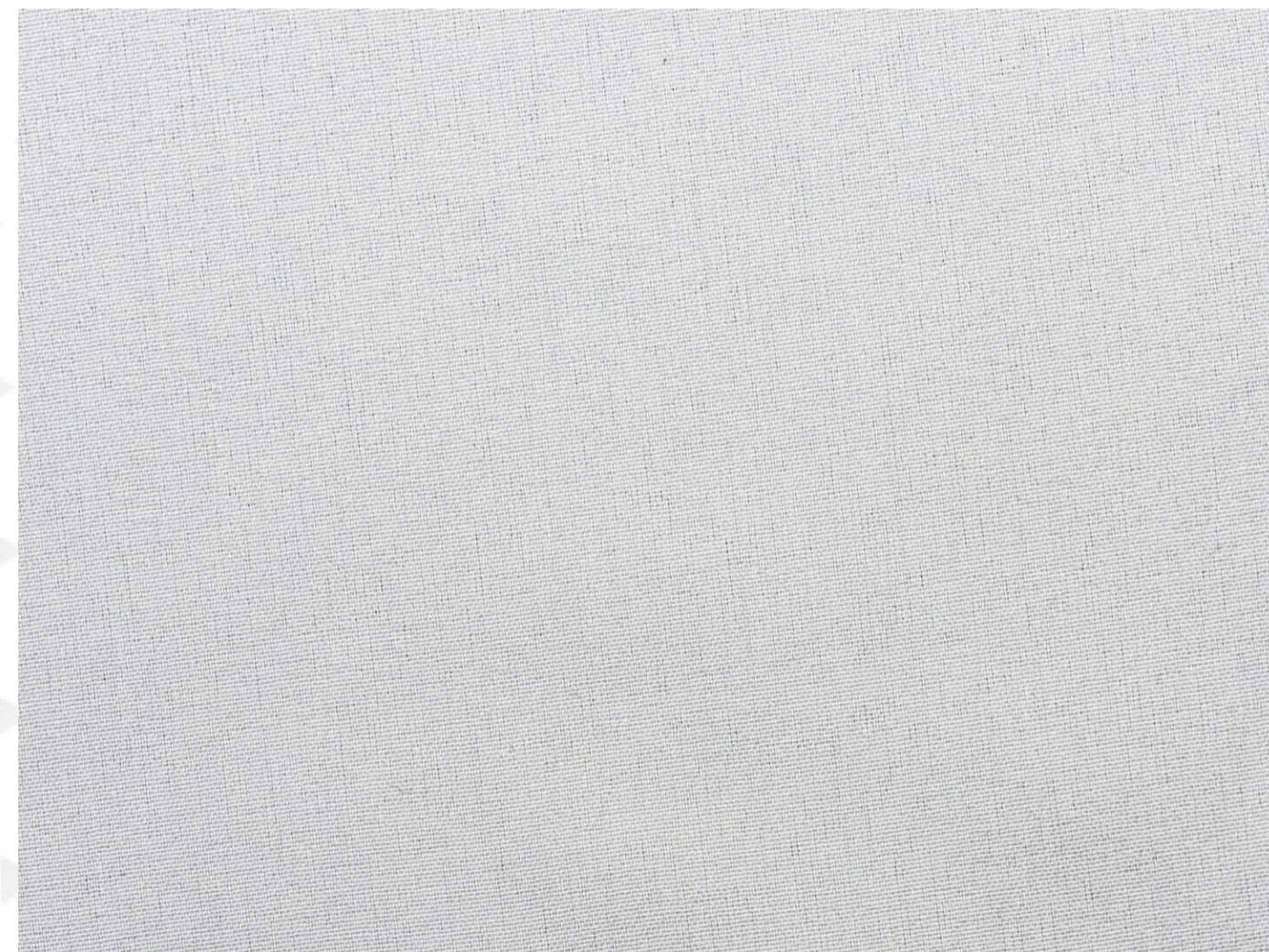
Print Type: **Sublimation**

Weight: **130gsm**

Material Composition: **100% polyester**

Fabric Use:

- **Track Jacket**
- **Track Pants**





SKU: SP-023

Tyslon Fabric

Print Type: **Sublimation**

Weight: **140gsm**

Material Composition: **100% polyester**

Fabric Use:

- Track Jacket
- Bucket Hats
- Lining
- Caps
- Mask
- Drawstring Bag



SKU: SP-027

4D Stretch Fiscale Fabric

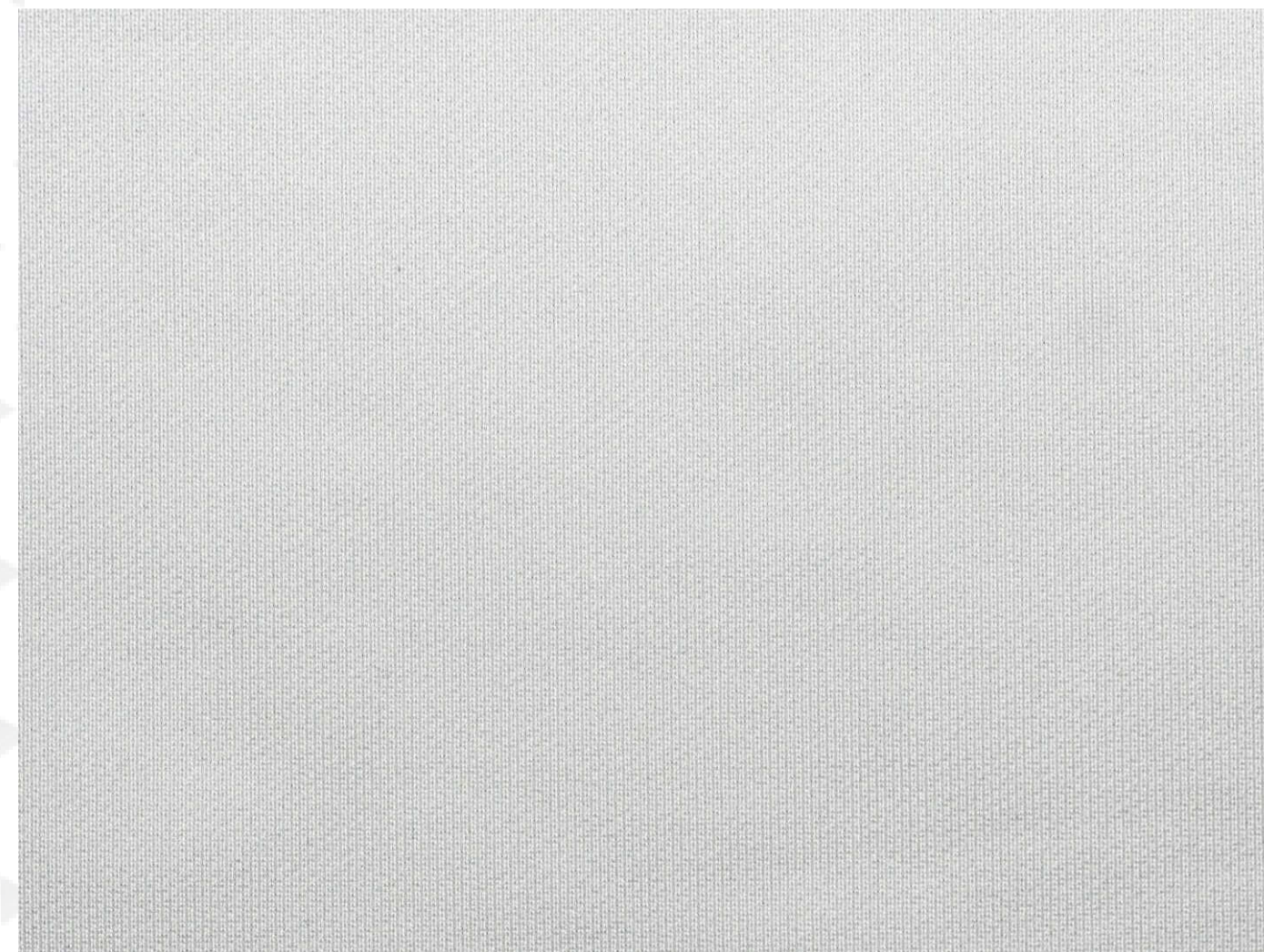
Print Type: **Sublimation**

Weight: **280gsm**

Material Composition: **91% polyester 9% spandex**

Fabric Use:

- Rugby Jersey
- AFL Guernsey





SKU: SP-028

KW14 Corded Knitted Fabric

Print Type: **Sublimation**

Weight: **220gsm**

Material Composition: **92% polyester 8% spandex**

Fabric Use:

• **Rugby Shorts**

• **Jackets**

• **Pants**





SKU: SP-030

Polytwill Fabric

Print Type: **Sublimation**

Weight: **220gsm**

Material Composition: **100% polyester**

Fabric Use:

- **Rugby Shorts**





SKU: SP-031

Sublimated Hoodie Fleece Fabric

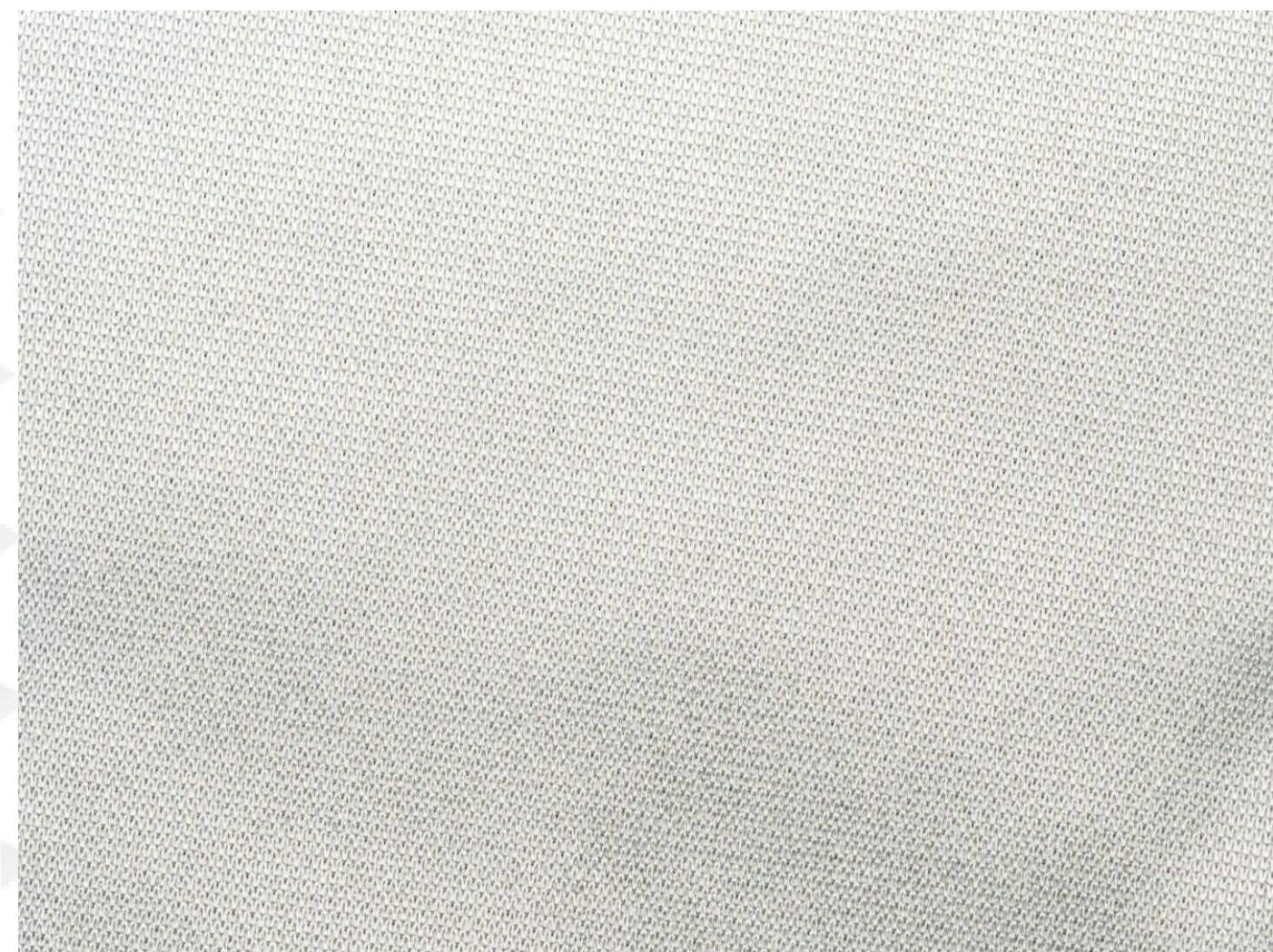
Print Type: **Sublimation**

Weight: **340gsm**

Material Composition: **100% polyester**

Fabric Use:

- **Hoodie**





SKU: SP-032

Towel Fabric

Print Type: **Sublimation**

Weight: **400gsm**

Material Composition: **100% polyester**

Fabric Use:

- **Towels**





SKU: SP-035

Nitro Mesh

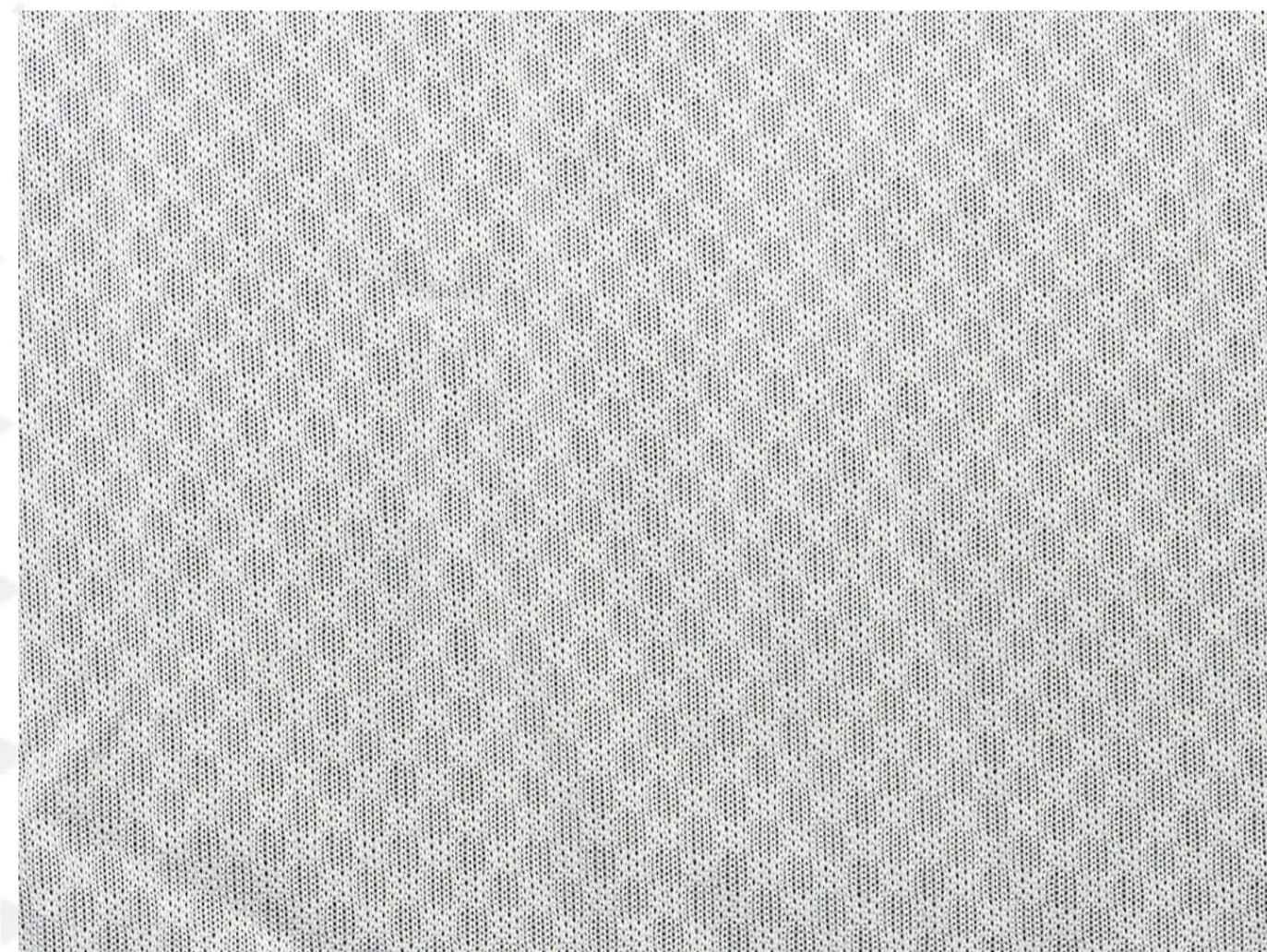
Print Type: **Sublimation**

Weight: **120gsm**

Material Composition: **100% polyester**

Fabric Use:

- Singlet
- T-shirt





SKU: SP-036

CoolPass Fabric

Print Type: **Sublimation**

Weight: **140gsm**

Material Composition: **86% polyester 14% spandex**

Fabric Use:

- **Singlet**
- **T-shirt**
- **Polo**





SKU: SP-044

Cricket Pants Fabric

Print Type: **Sublimation**

Weight: **220gsm**

Material Composition: **100% polyester**

Fabric Use:

- **Cricket Pants**





SKU: SP-050

Deluxe Hoodie Fabric

Print Type: **Sublimation**

Weight: **340gsm**

Material Composition: **87% polyester 13% spandex**

Fabric Use:

- **Hoodie**





SKU: SP-054

Hawaiian Shirt Woven Cotton Fabric with Digital Printing

Print Type: **Sublimation**

Weight: **120gsm**

Material Composition: **100% polyester**

Fabric Use:

- **Hawaiian Shirt**





SKU: SP-055

210T Fabric

Print Type: **Sublimation**

Weight: **90gsm**

Material Composition: **100% polyester**

Fabric Use:

- Lining
- Drawstring Bag
- Jacket





SKU: SP-057

Miniwaffle Fabric

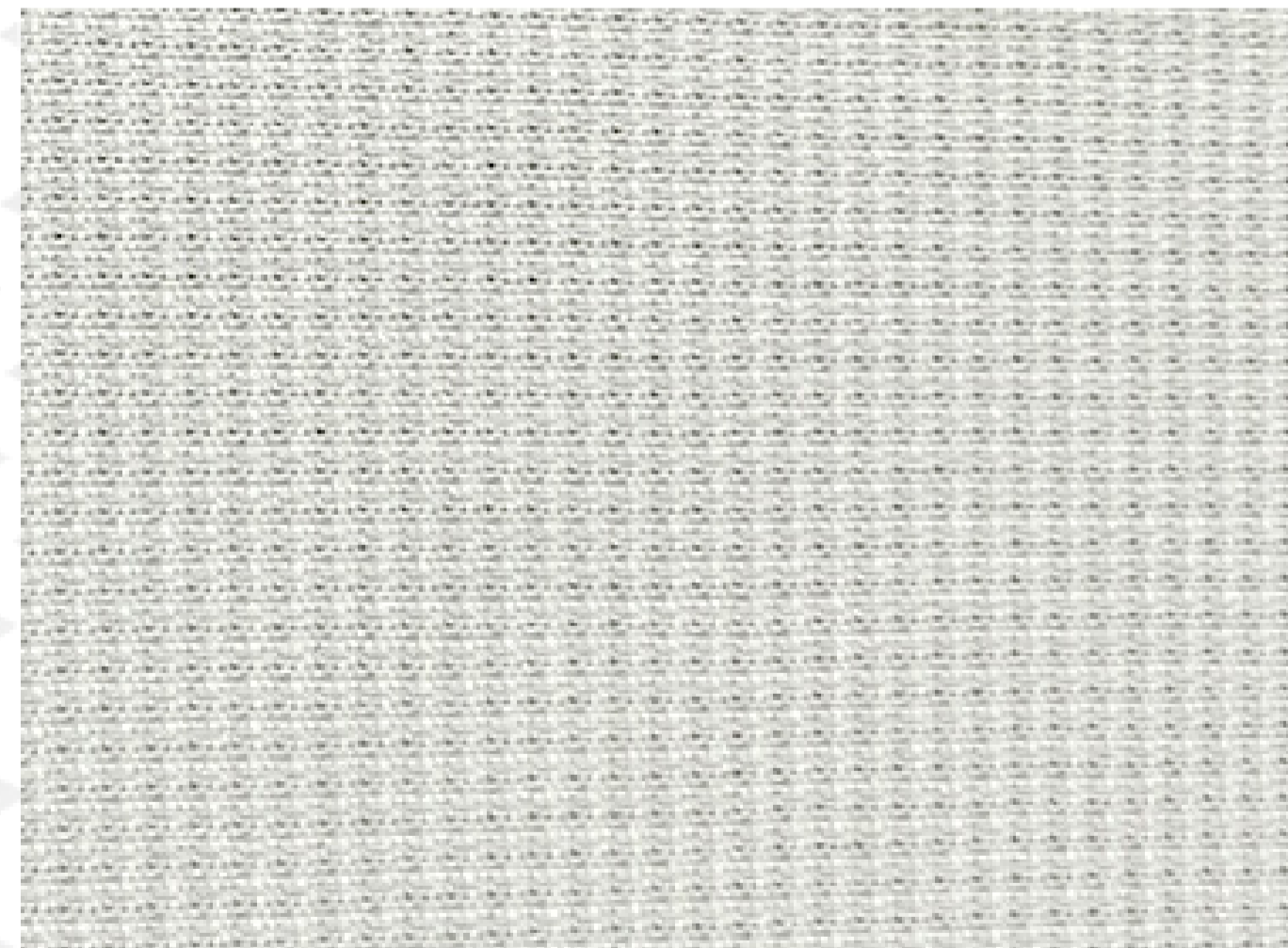
Print Type: **Sublimation**

Weight: **160gsm**

Material Composition: **100% polyester**

Fabric Use:

- Polo
- T-shirt
- Shorts
- Netball Dress



SKU: SP-058

Exodry / Cooldry Fabric

Print Type: **Sublimation**

Weight: **250gsm**

Material Composition: **95% polyester 5% spandex**

Fabric Use:

- **AFL Guernsey**
- **Rugby Jersey**
- **Jacket**
- **Pants**





SKU: SP-059

SPF50+ Chlorine Resistant Fabric

Print Type: **Sublimation**

Weight: **220gsm**

Material Composition: **84% polyester 16% spandex**

Fabric Use:

- **Rash Top**
- **Rash Guard**
- **Swimming Wear**





SKU: SP-061

Stretchy Single Jersey Fabric

Print Type: **Sublimation**

Weight: **150gsm**

Material Composition: **80% polyester 20% spandex**

Fabric Use:

- T-shirt
- Singlet
- Relaxed Pants
- Headwear





SKU: SP-067

Fila Golf Skirt Fabric

Print Type: **Sublimation**

Weight: **280gsm**

Material Composition: **85% polyester 15% spandex**

Fabric Use:

- **Golf Skirt**
- **Golf Skort**
- **Pants**

