

# SPHERE SPORT FABRIC BOOK

 [www.sphere-sports.com](http://www.sphere-sports.com)

 [hello@sphere-sports.com](mailto:hello@sphere-sports.com)

 No. 66 Weijian Road Industrial Area, Dongguan, China

 (+86) 769-2360-5821

Follow Us:





SKU: SP-001

## Evaporex Eyelet Mesh Fabric

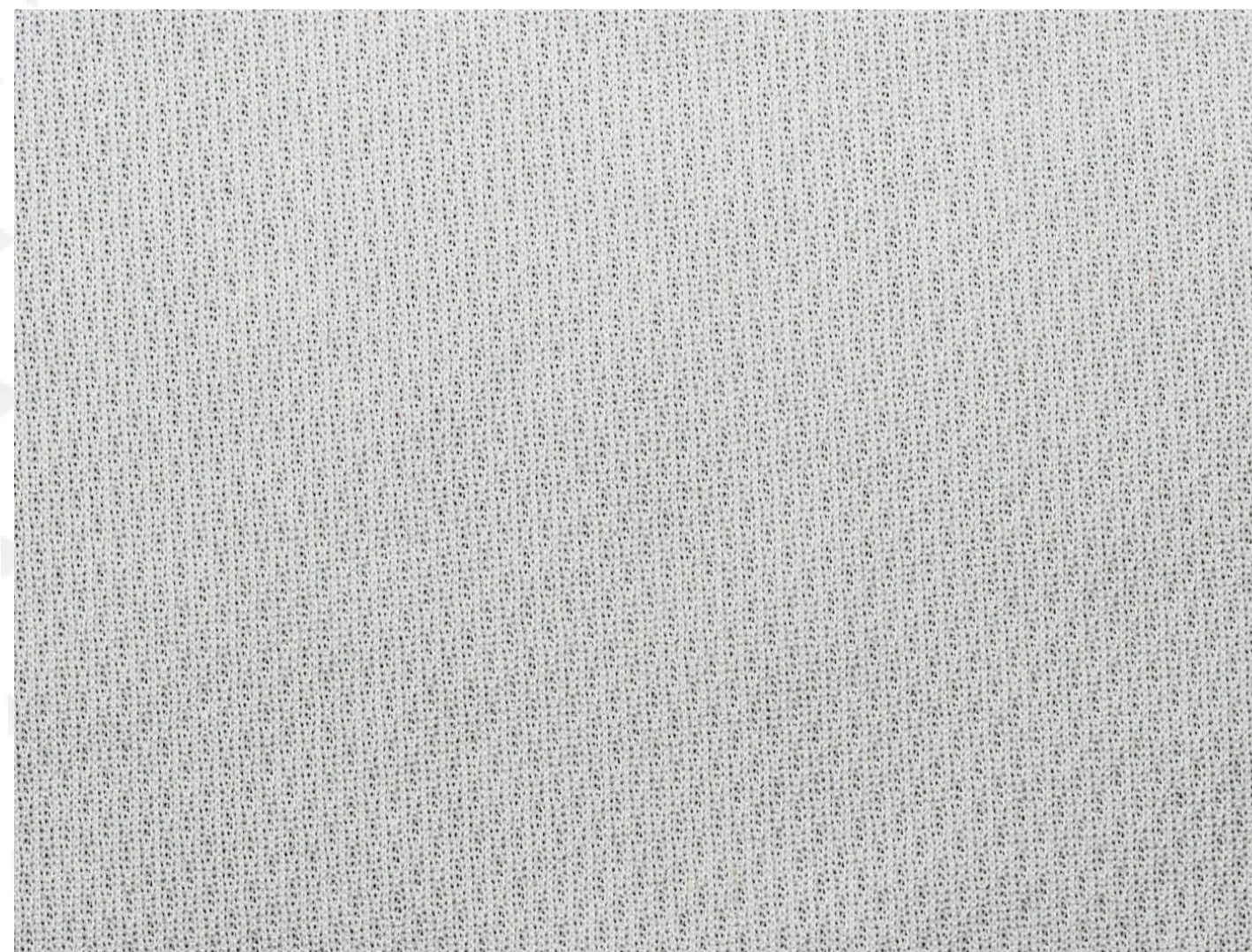
Print Type: **Sublimation**

Weight: **100gsm**

Material Composition: **100% polyester**

Fabric Use:

- Reversible Singlet
- Reversible T-shirt





SKU: SP-002

## Evaporex Eyelet Mesh Fabric

---

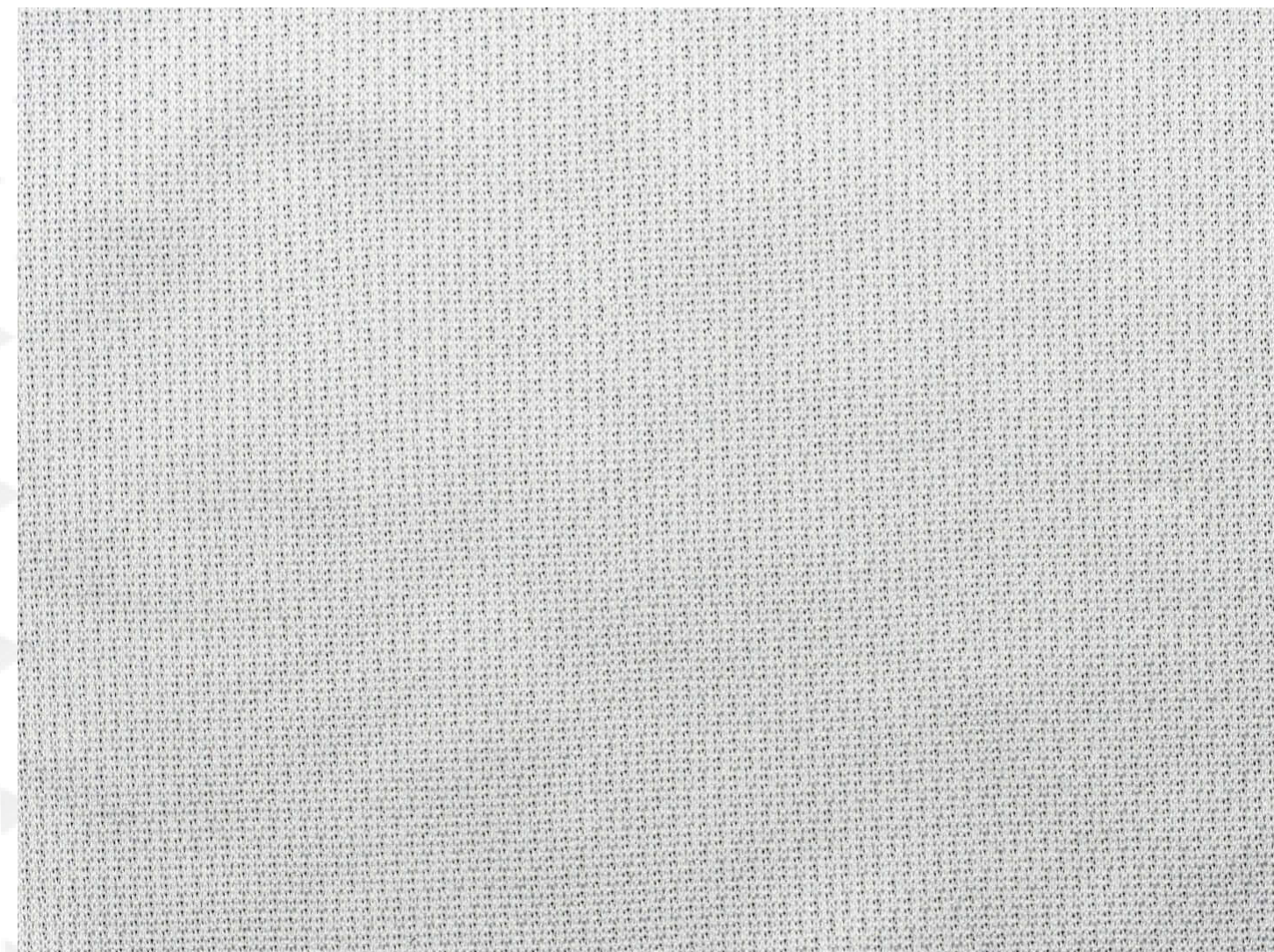
Print Type: **Sublimation**

Weight: **150gsm**

Material Composition: **100% polyester**

Fabric Use:

- Singlet
- T-shirt
- Polo
- Netball Dress
- Shorts





SKU: SP-003

## Evaporex Eyelet Mesh Fabric

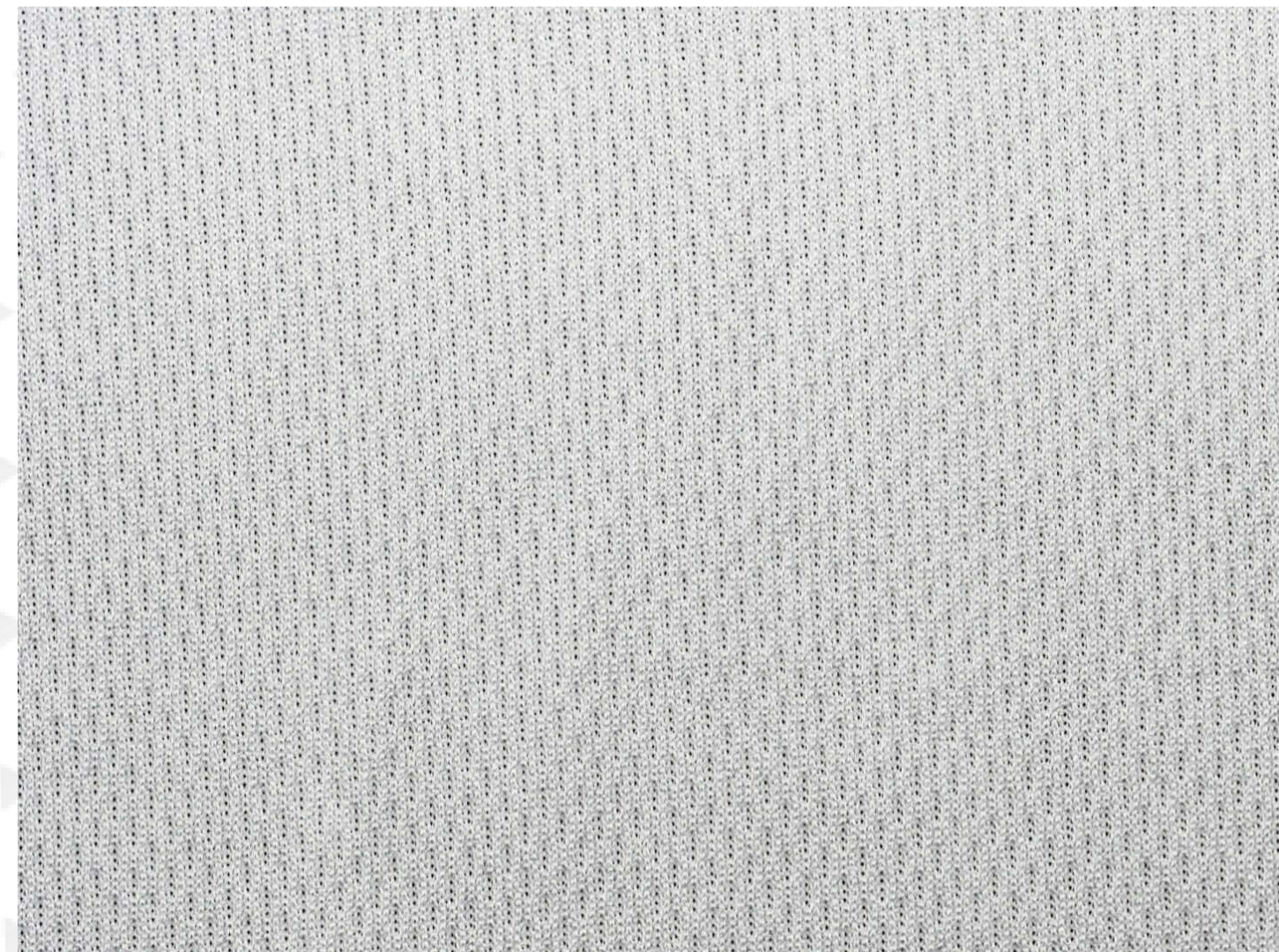
Print Type: **Sublimation**

Weight: **160gsm**

Material Composition: **100% polyester**

Fabric Use:

- Singlet
- Netball Dress
- Soccer Jersey
- T-shirt
- Shorts
- Polo
- Basketball Jersey





SKU: SP-004

## Interlock Fabric

---

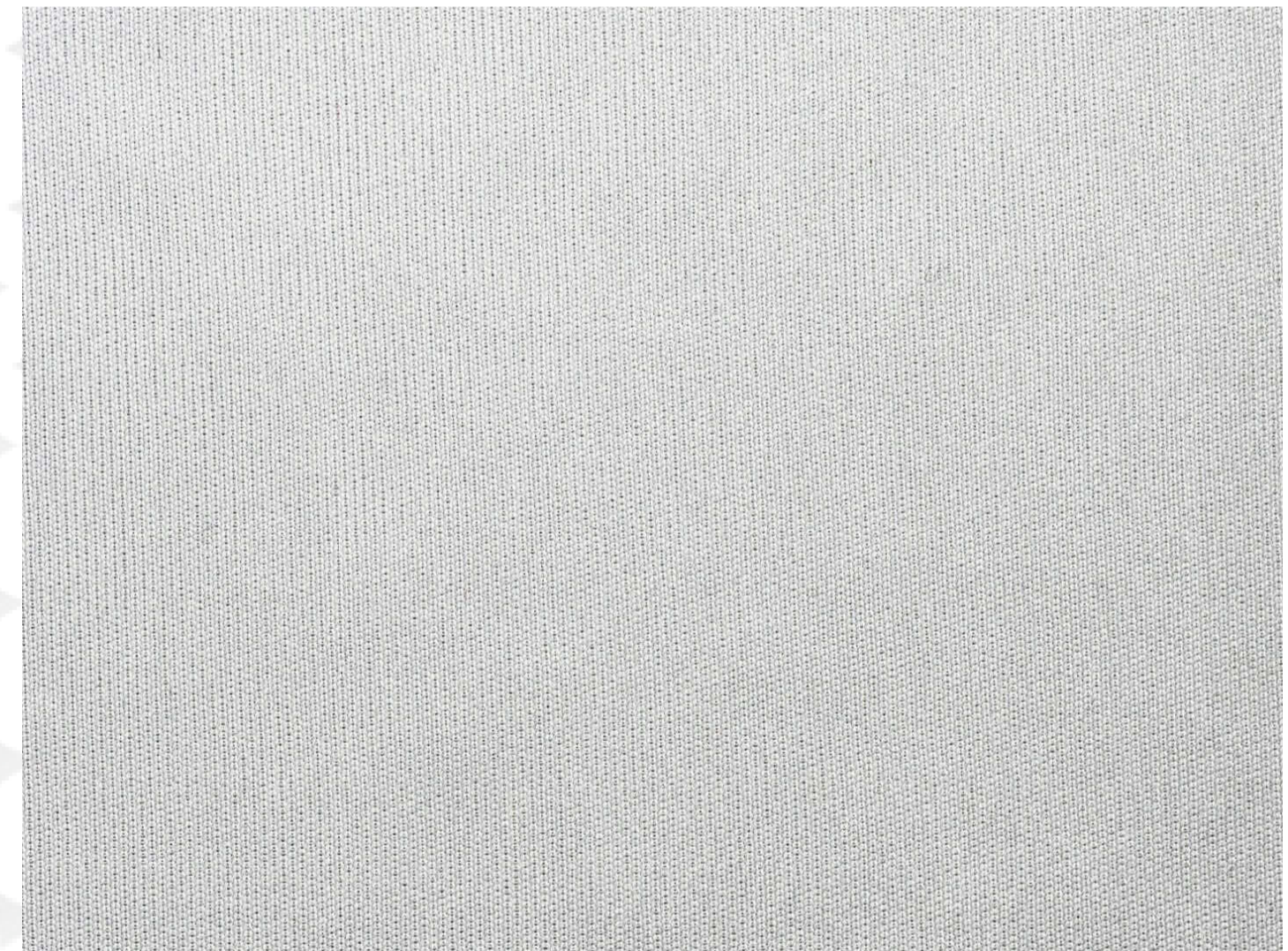
Print Type: **Sublimation**

Weight: **140gsm, 160gsm, 180 gsm, 200 gsm**

Material Composition: **100% polyester**

Fabric Use:

- Singlet
- Netball Dress
- Soccer Jersey
- T-shirt
- Shorts
- Polo
- Basketball Jersey



SKU: SP-005

## Supreme Mesh Fabric

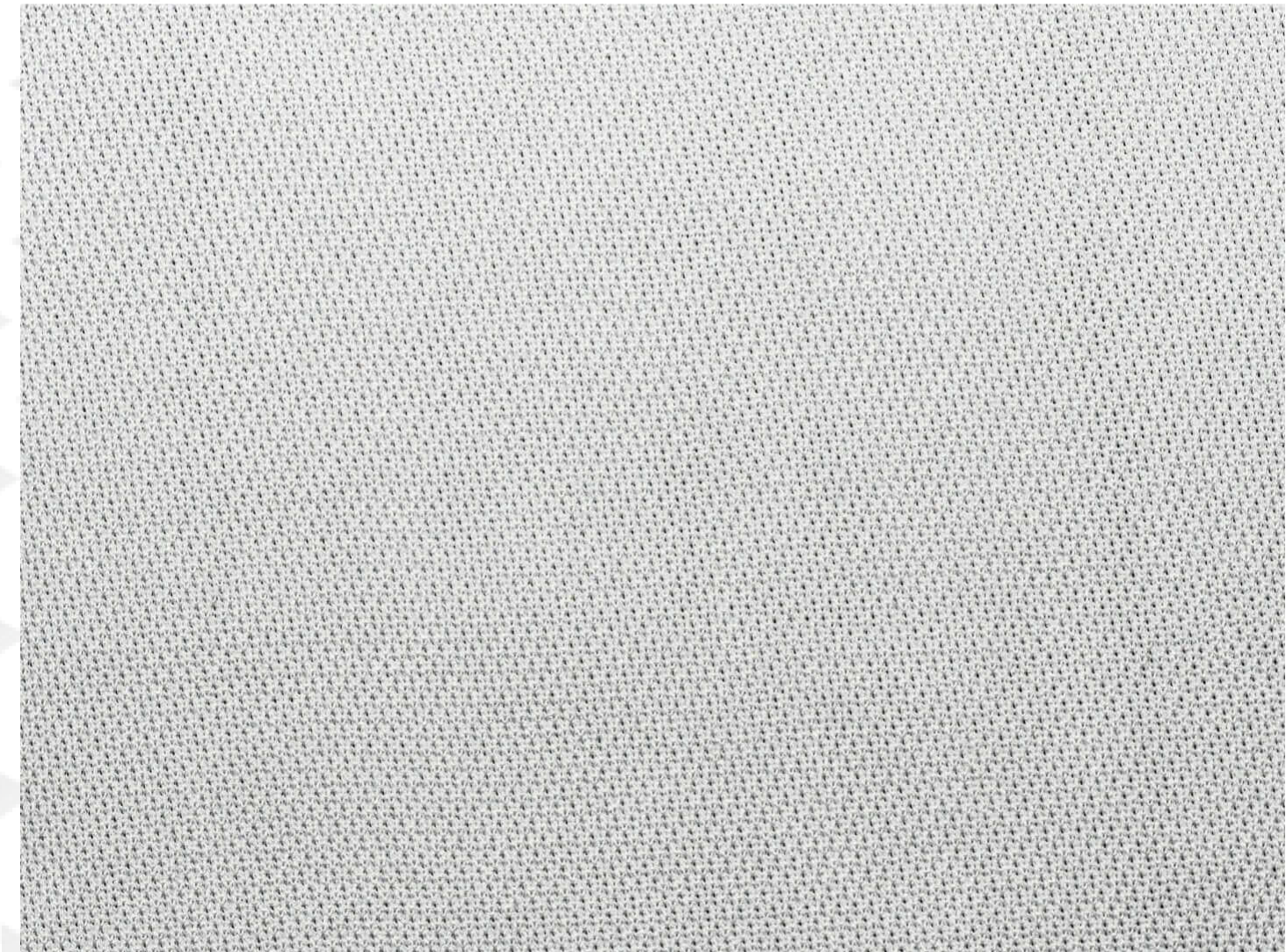
Print Type: **Sublimation**

Weight: **160gsm**

Material Composition: **100% polyester**

Fabric Use:

- Singlet
- T-shirt
- Polo
- Netball Dress
- Shorts
- Basketball Jersey
- Soccer Jersey
- Cricket Jersey





SKU: SP-006

## Tartan Mesh Fabric

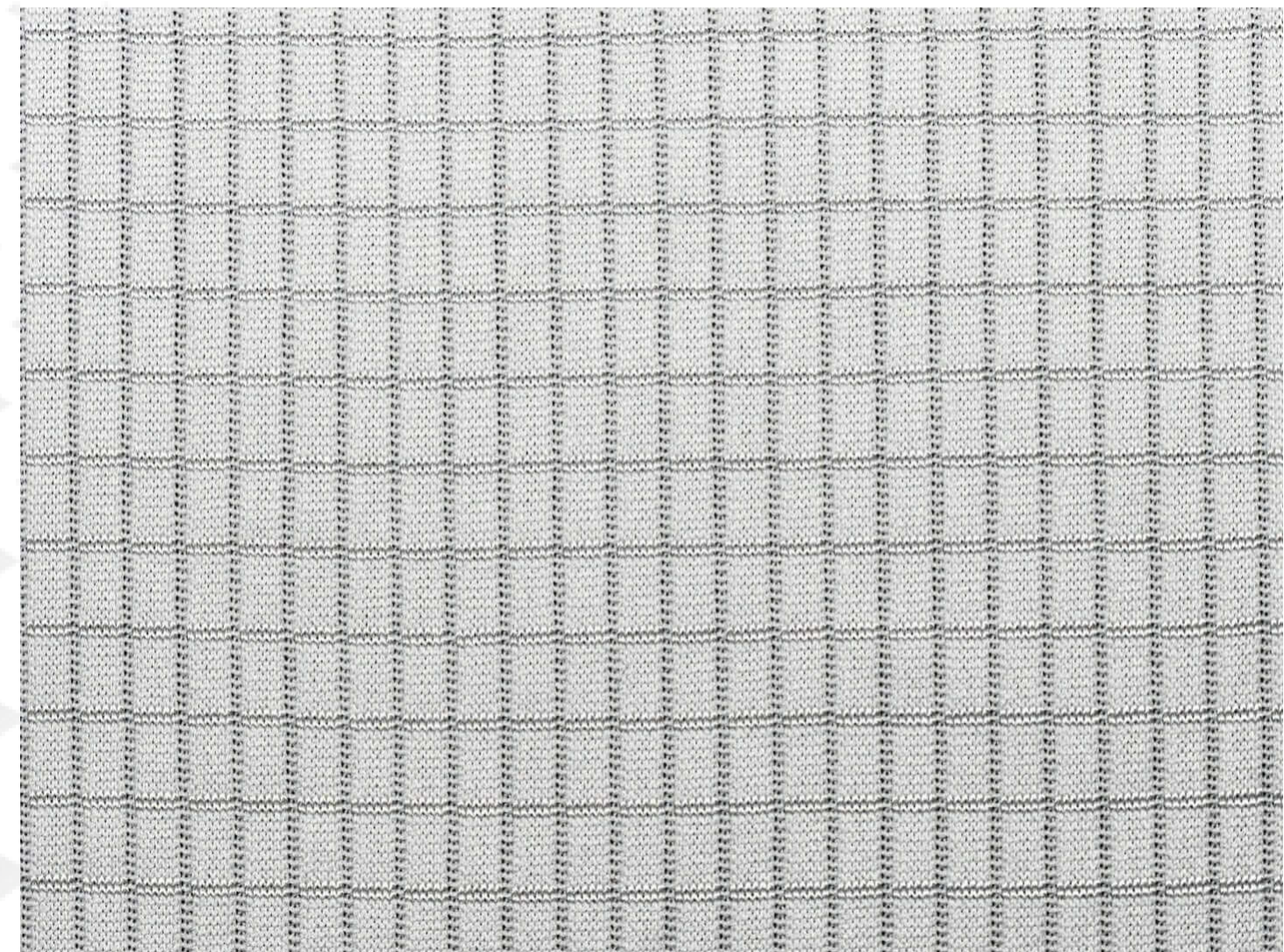
Print Type: **Sublimation**

Weight: **160gsm**

Material Composition: **100% polyester**

Fabric Use:

- T-shirt
- Polo
- Shorts
- Singlet





SKU: SP-007

## A-Line Mesh Fabric

---

Print Type: **Sublimation**

Weight: **140gsm**

Material Composition: **100% polyester**

Fabric Use:

- Singlet
- T-shirt
- Polo
- Netball Dress
- Shorts





SKU: SP-008

## Evaporex Fabric

---

Print Type: **Sublimation**

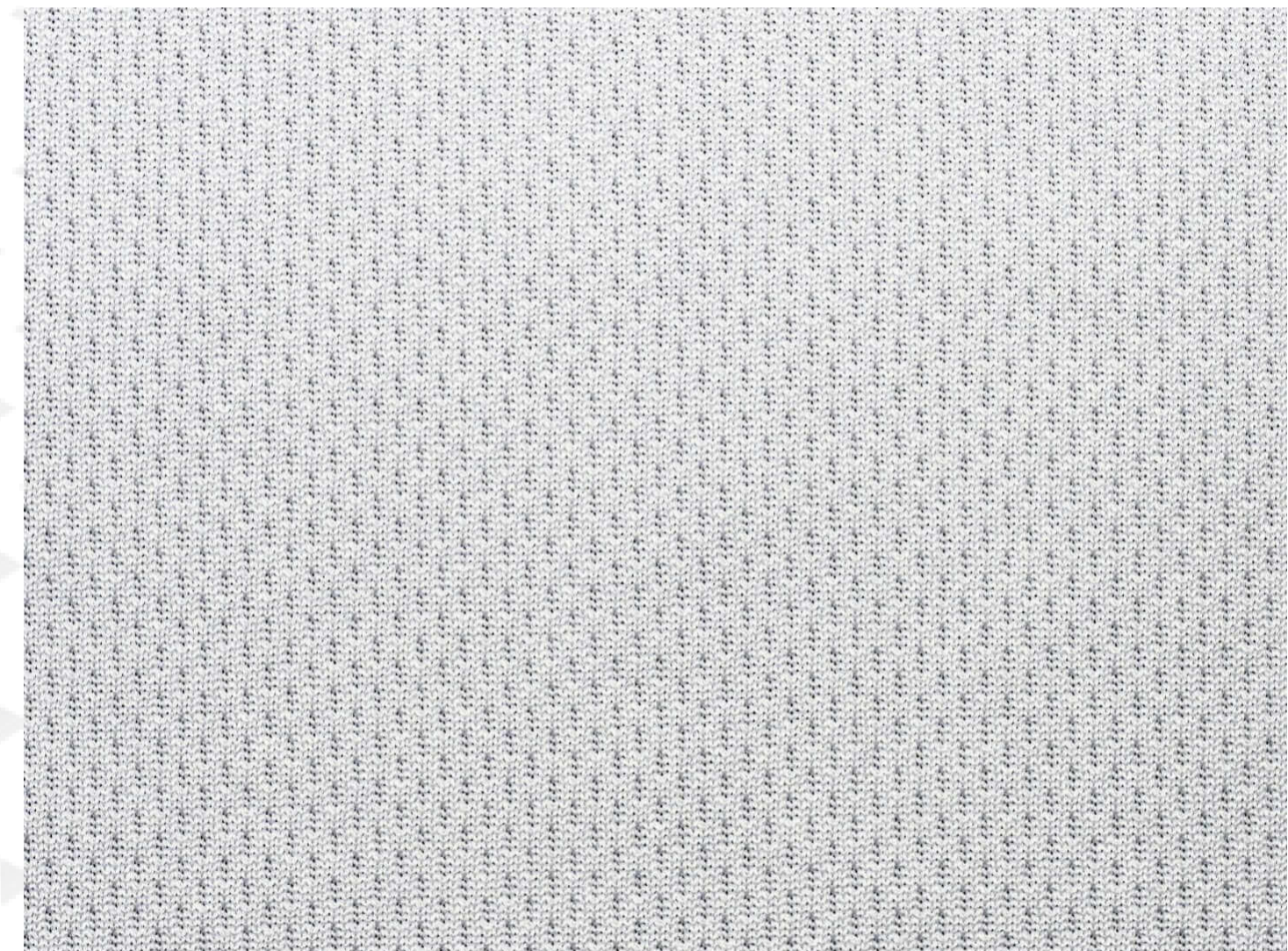
Weight: **200gsm**

Material Composition: **100% polyester**

Fabric Use:

• **Baseball Top**

• **Pants**



SKU: SP-009

## UA (Under Armour) Fabric

---

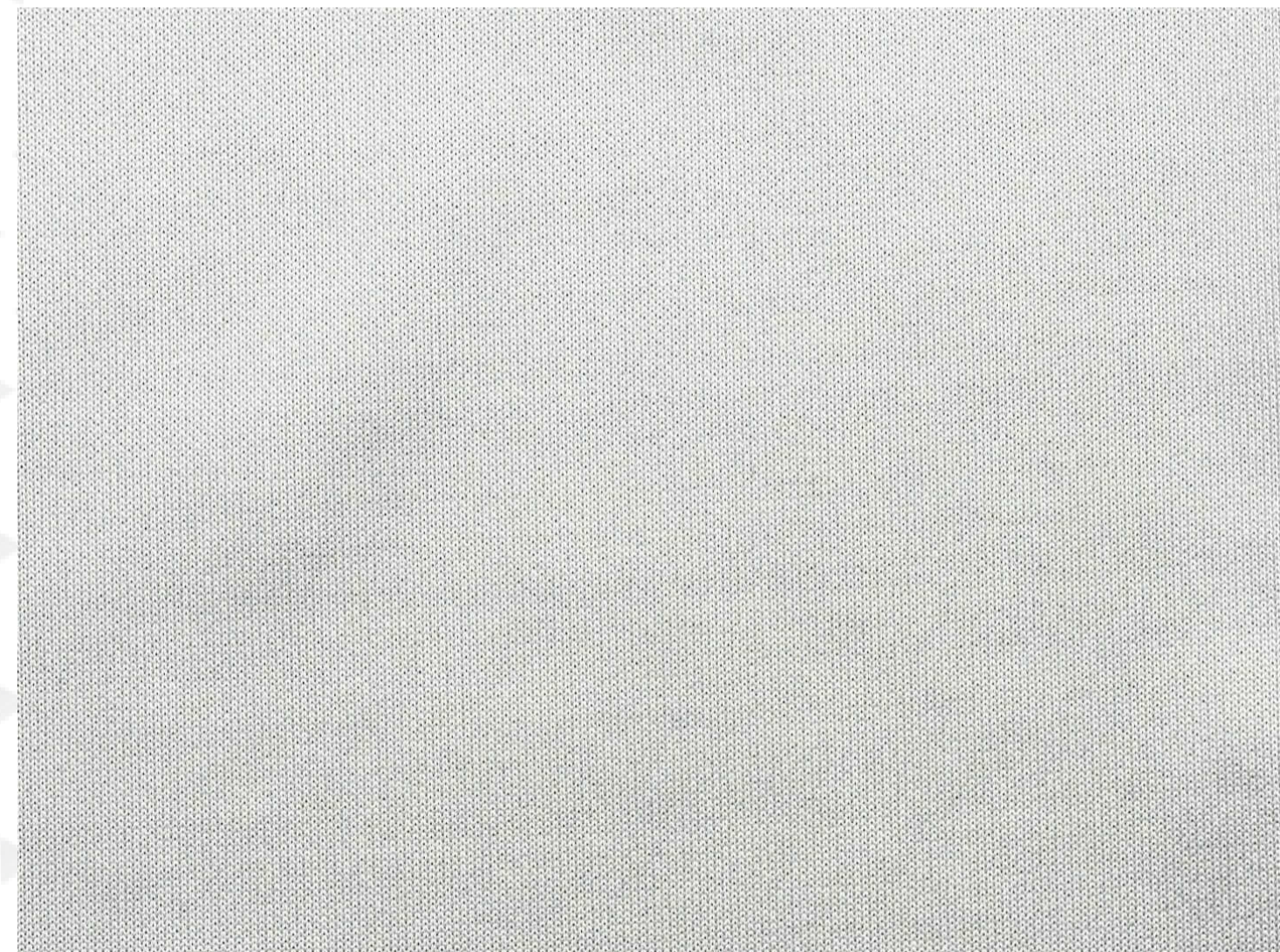
Print Type: **Sublimation**

Weight: **170gsm**

Material Composition: **92% polyester 8% spandex**

Fabric Use:

- **Polo**
- **T-shirt**





SKU: SP-010

## Repreve Recycled Nano Pique Fabric

---

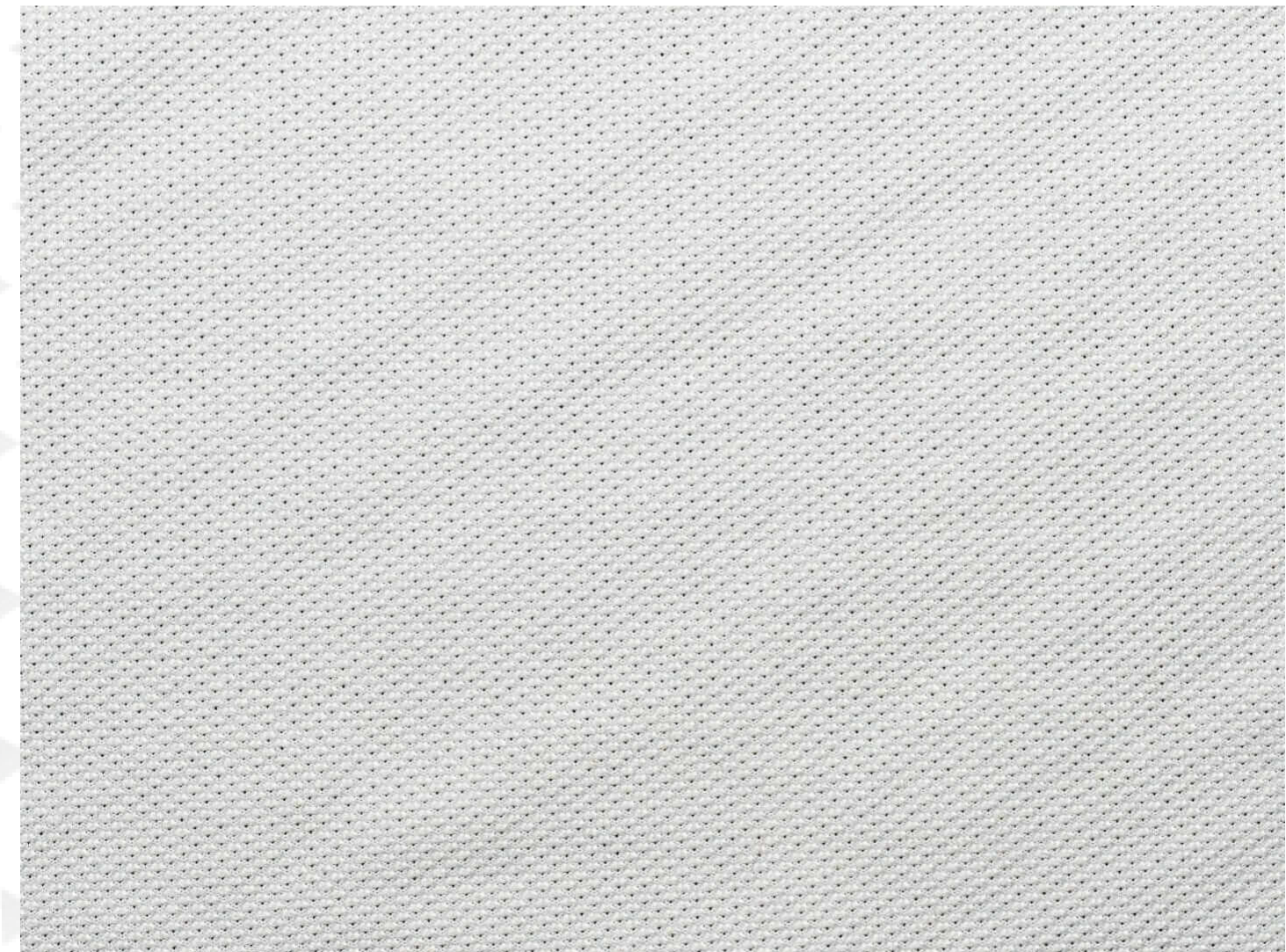
Print Type: **Sublimation**

Weight: **160gsm**

Material Composition: **92% polyester 8% spandex**

Fabric Use:

- Singlet
- T-shirt
- Polo
- Netball Dress
- Cricket Top
- Pants





SKU: SP-011

## Ultra Mesh Fabric

Print Type: **Sublimation**

Weight: **150gsm**

Material Composition: **100% polyester**

Fabric Use:

- Singlet
- T-shirt
- Basketball Jersey
- Baseball Jersey
- Softball Jersey





SKU: SP-012

## Butterfly Mesh Fabric

---

Print Type: **Sublimation**

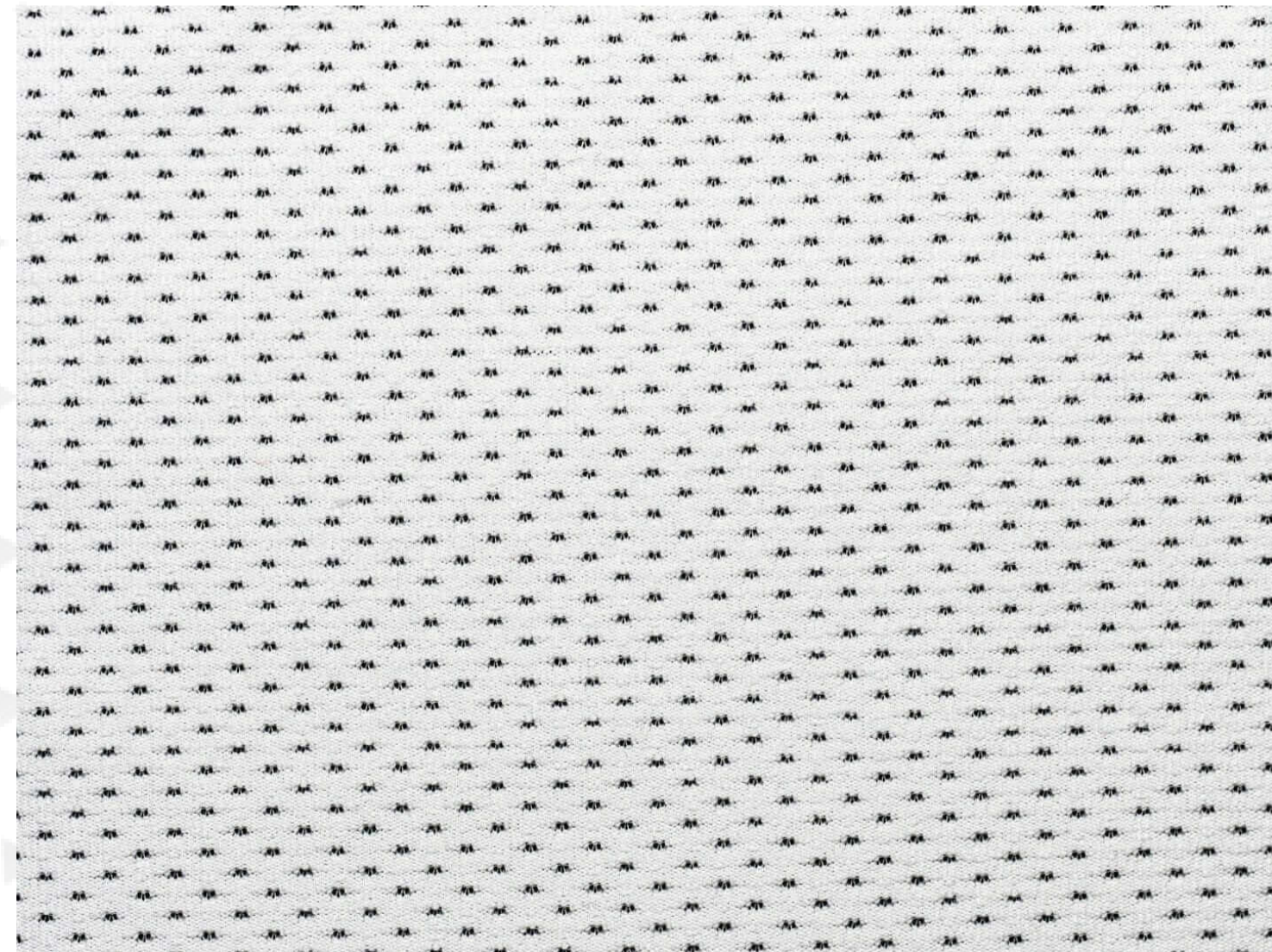
Weight: **180gsm**

Material Composition: **90% polyester 10% spandex**

Fabric Use:

• **Cycling Jersey**

• **Side Panel**





SKU: **SP-014**

## **Star Mesh Fabric**

---

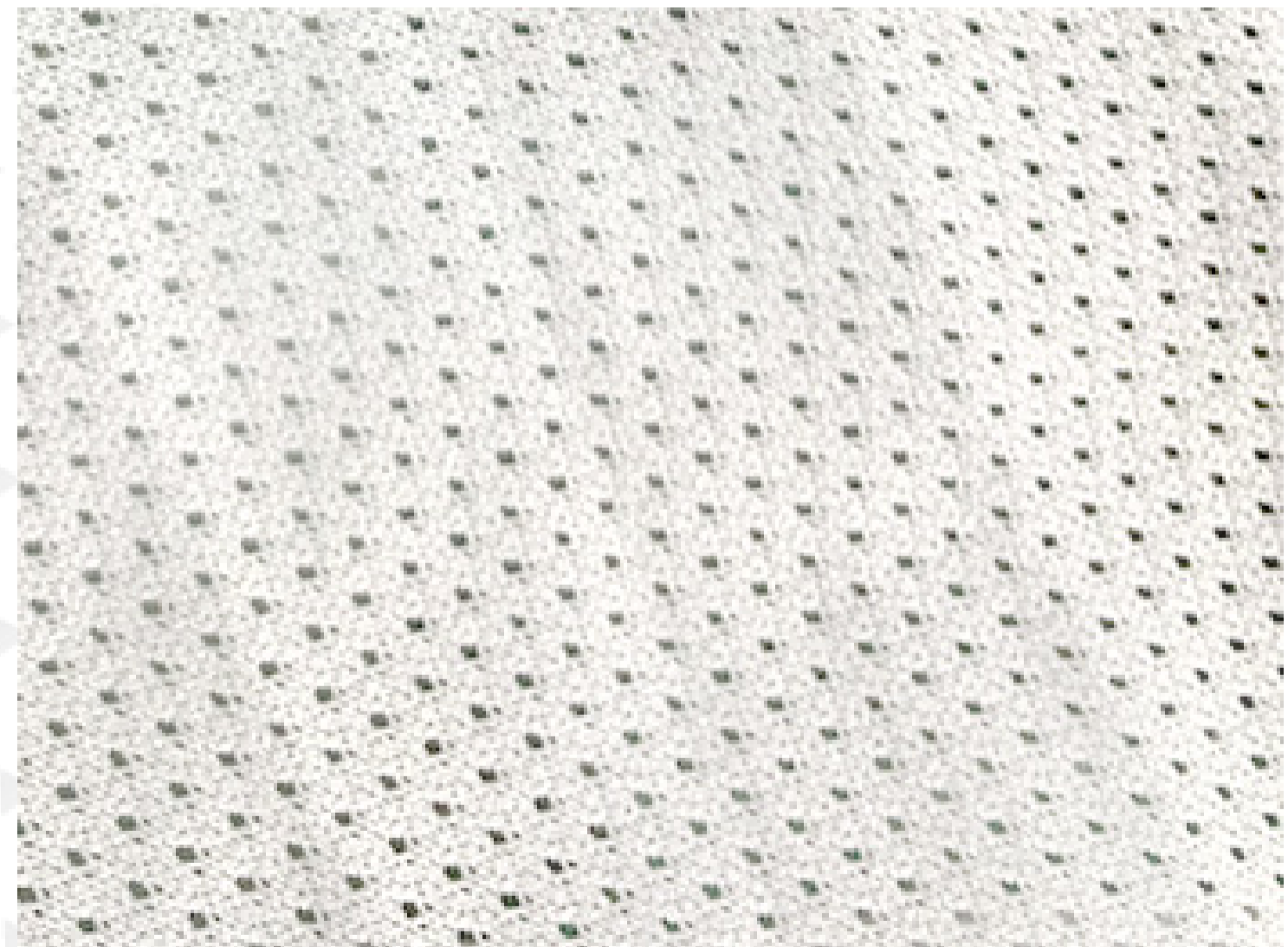
Print Type: **Sublimation**

Weight: **80gsm**

Material Composition: **100% polyester**

Fabric Use:

- **Lining**
- **Bibs**





SKU: SP-015

## Peach Skin Fabric

---

Print Type: **Sublimation**

Weight: **130gsm**

Material Composition: **100% polyester**

Fabric Use:

- **Jacket**
- **Beach Shorts**



SKU: SP-016

## Hydrotek Fabric

---

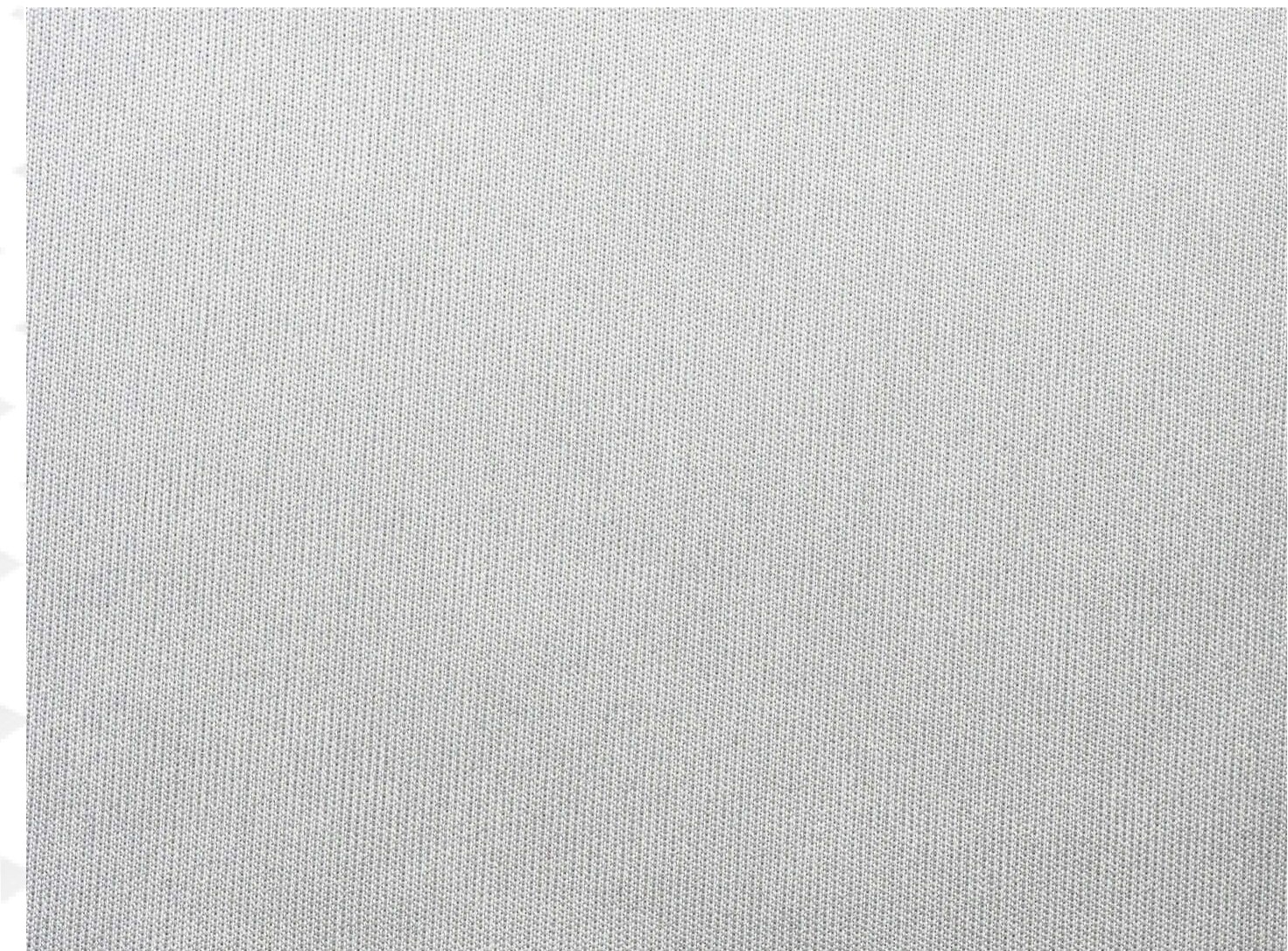
Print Type: **Sublimation**

Weight: **200gsm**

Material Composition: **100% polyester**

Fabric Use:

- **AFL Shorts**
- **Rugby Shorts**







SKU: SP-017

## Hydrotek Fabric

---

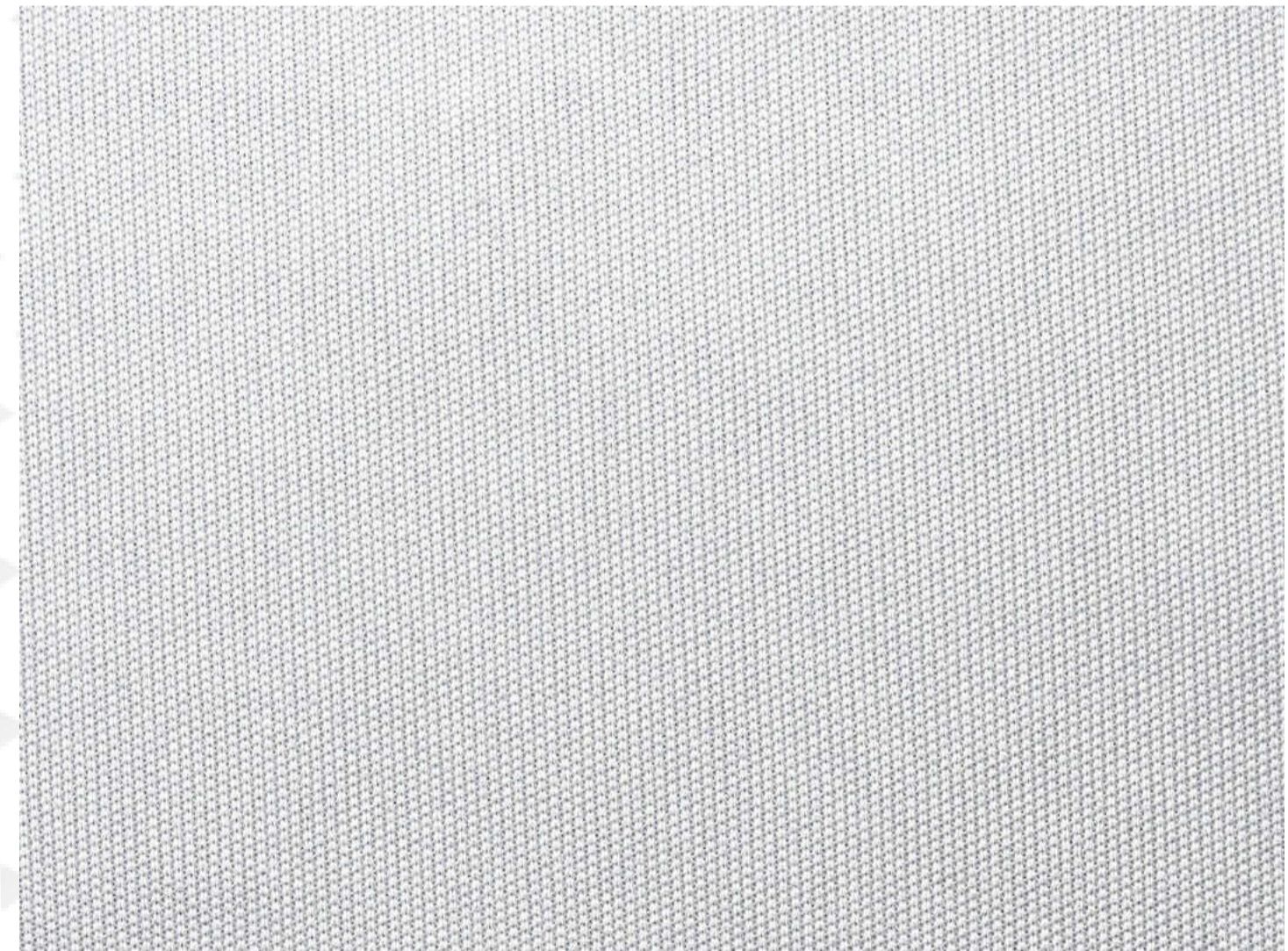
Print Type: **Sublimation**

Weight: **260gsm**

Material Composition: **100% polyester**

Fabric Use:

- **AFL Shorts**
- **Rugby Shorts**





SKU: SP-019

## Lycra Fabric

---

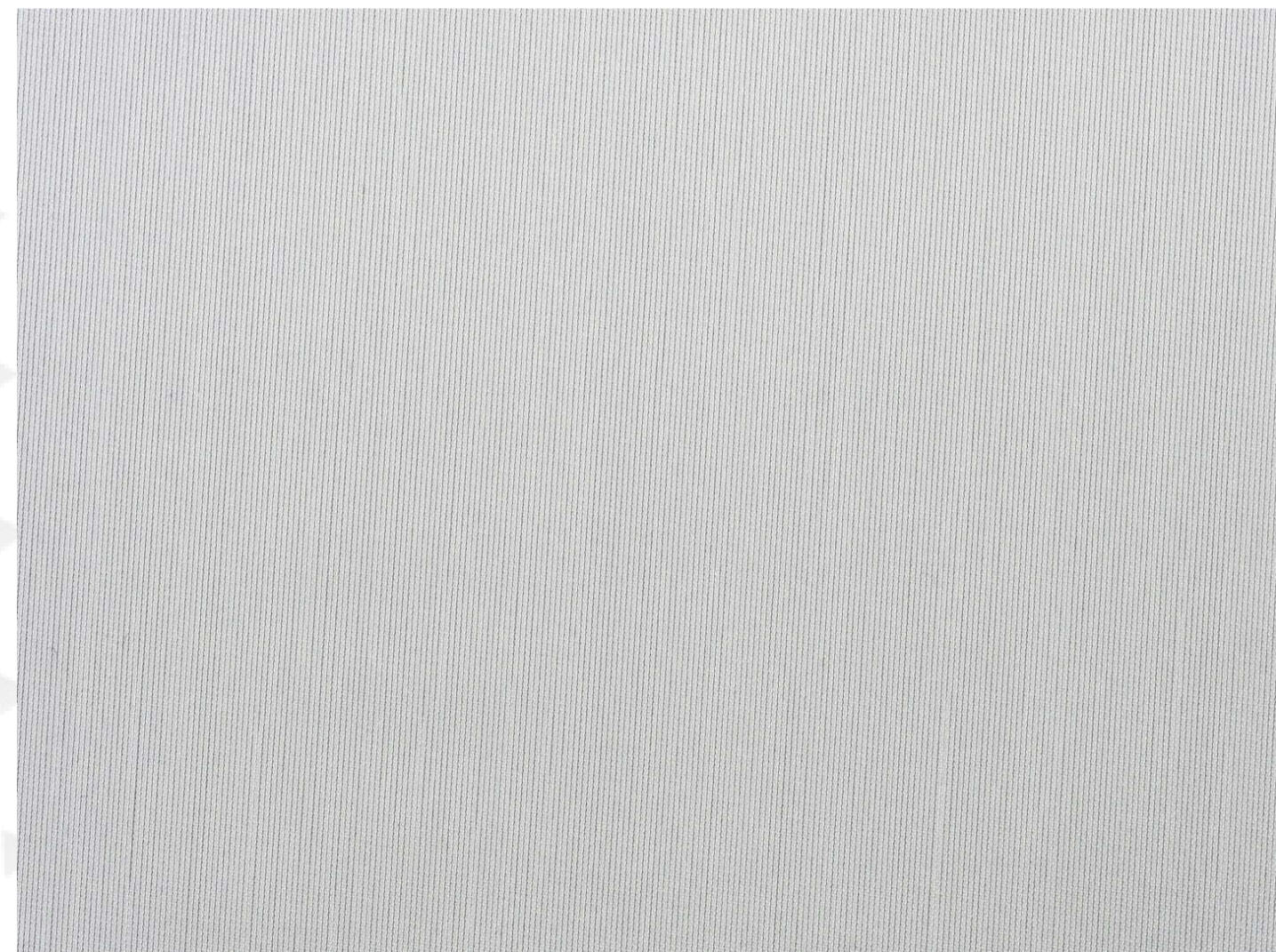
Print Type: **Sublimation**

Weight: **250gsm**

Material Composition: **82% polyester 18% spandex**

Fabric Use:

- Speedo
- Swimwear
- Rush Top
- Rush Guard
- Panel





SKU: SP-020

## 7327 Yoga Sublimation Fabric

---

Print Type: **Sublimation**

Weight: **230gsm**

Material Composition: **73% polyester 27% spandex**

Fabric Use:

- Yoga Uniform
- Leggings
- Tights





SKU: **SP-021**

## **75D Woven Fabric**

---

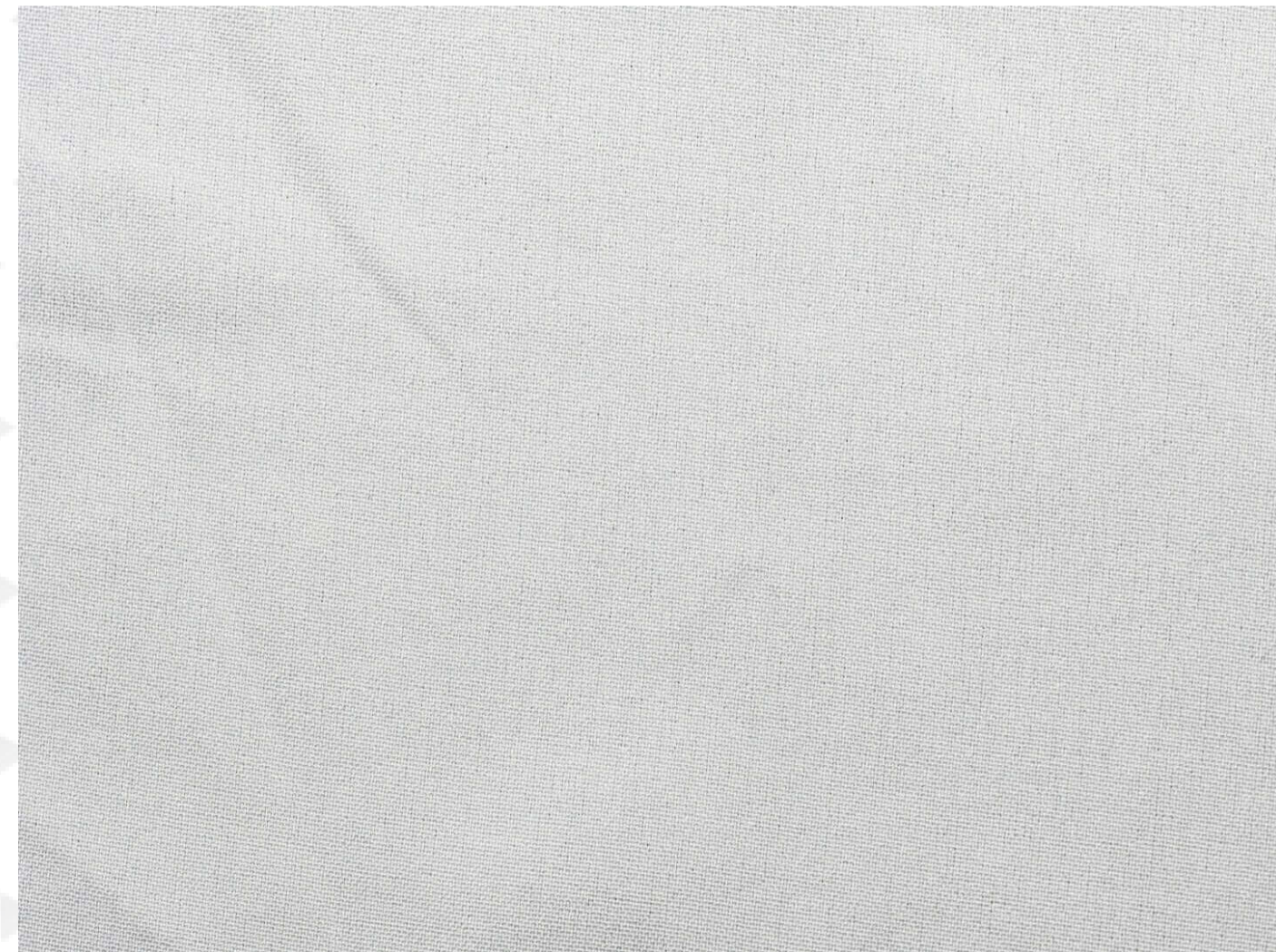
Print Type: **Sublimation**

Weight: **110gsm**

Material Composition: **95% polyester 5% spandex**

Fabric Use:

- **Running Shorts**
- **Travel Shorts**





SKU: SP-022

## 100D Woven Fabric

---

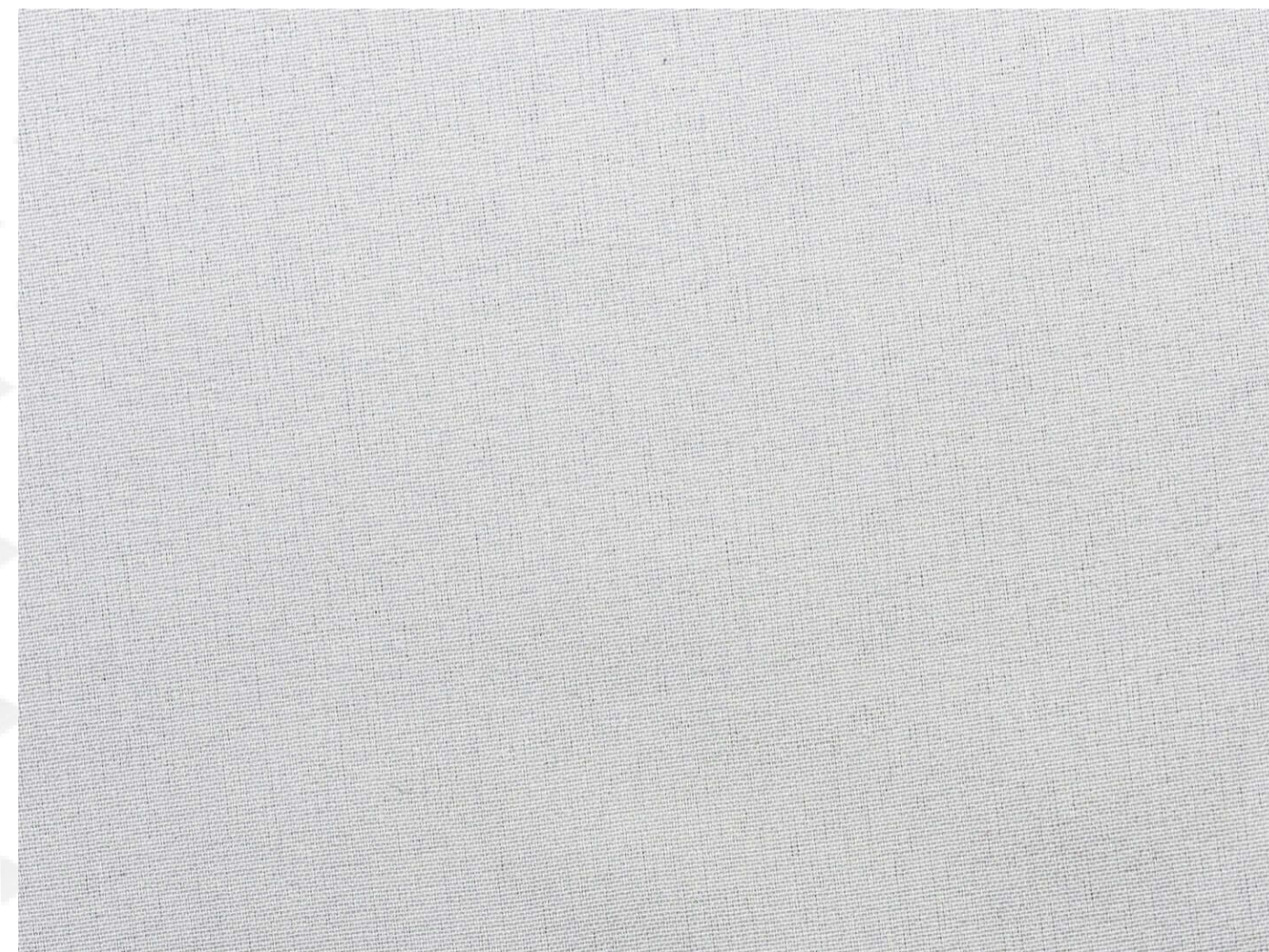
Print Type: **Sublimation**

Weight: **130gsm**

Material Composition: **100% polyester**

Fabric Use:

- Track Jacket
- Track Pants





SKU: SP-023

## Tyslon Fabric

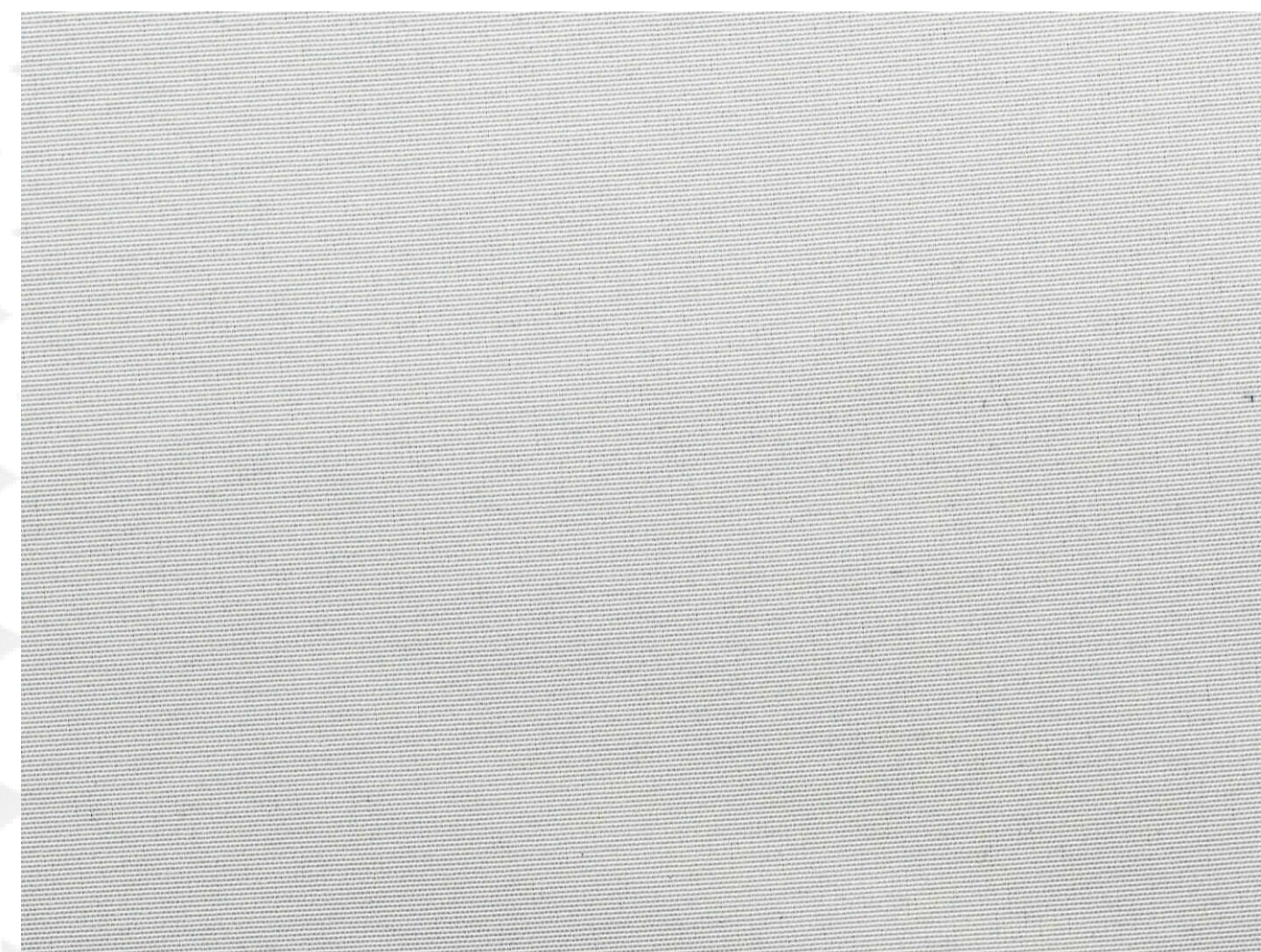
Print Type: **Sublimation**

Weight: **140gsm**

Material Composition: **100% polyester**

Fabric Use:

- Track Jacket
- Bucket Hats
- Lining
- Caps
- Mask
- Drawstring Bag



SKU: SP-027

## 4D Stretch Fiscale Fabric

---

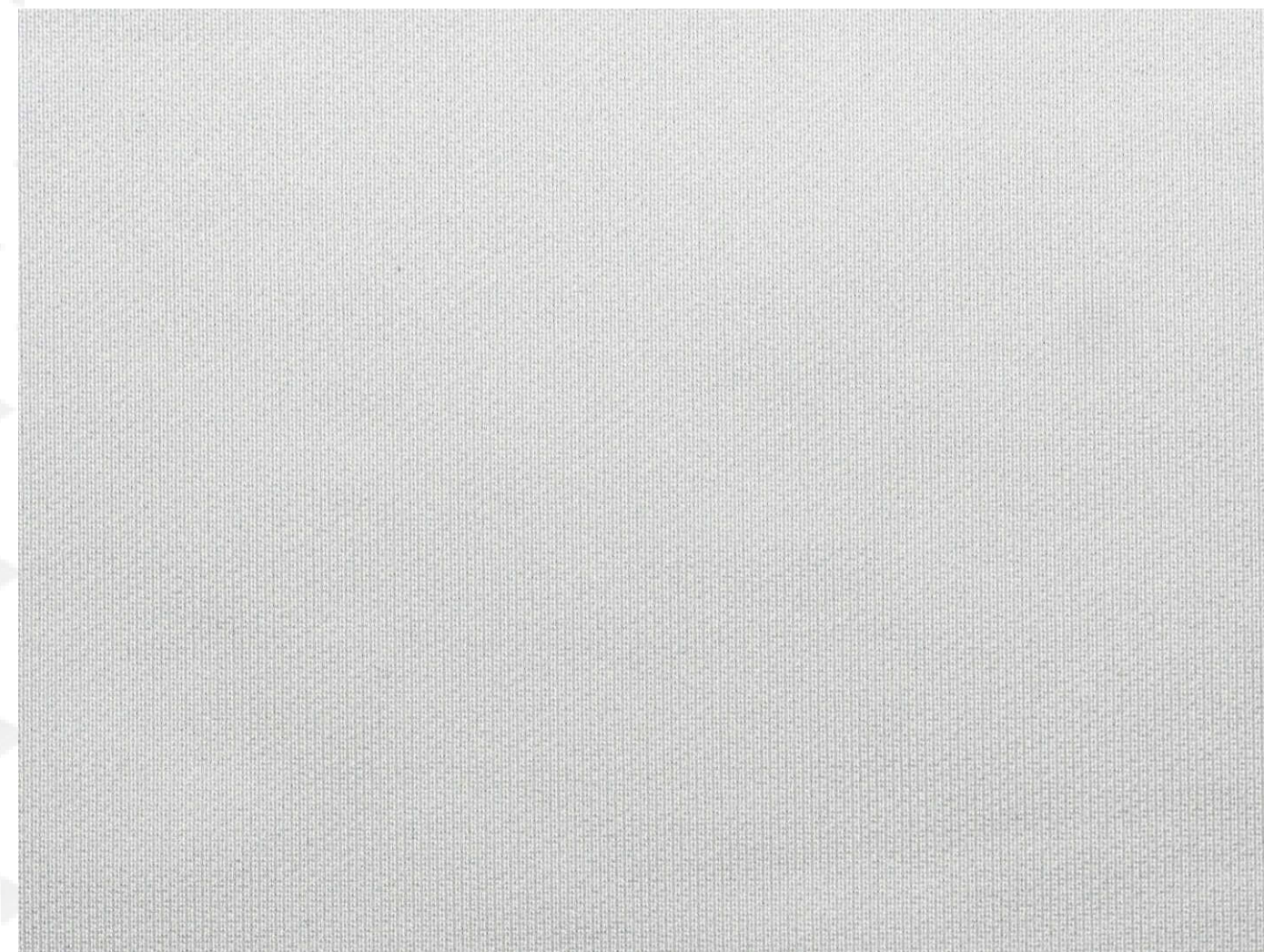
Print Type: **Sublimation**

Weight: **280gsm**

Material Composition: **91% polyester 9% spandex**

Fabric Use:

- Rugby Jersey
- AFL Guernsey





SKU: SP-028

## KW14 Corded Knitted Fabric

---

Print Type: **Sublimation**

Weight: **220gsm**

Material Composition: **92% polyester 8% spandex**

Fabric Use:

• **Rugby Shorts**

• **Jackets**

• **Pants**







SKU: SP-030

## Polytwill Fabric

---

Print Type: **Sublimation**

Weight: **220gsm**

Material Composition: **100% polyester**

Fabric Use:

- **Rugby Shorts**



SKU: SP-031

## Sublimated Hoodie Fleece Fabric

---

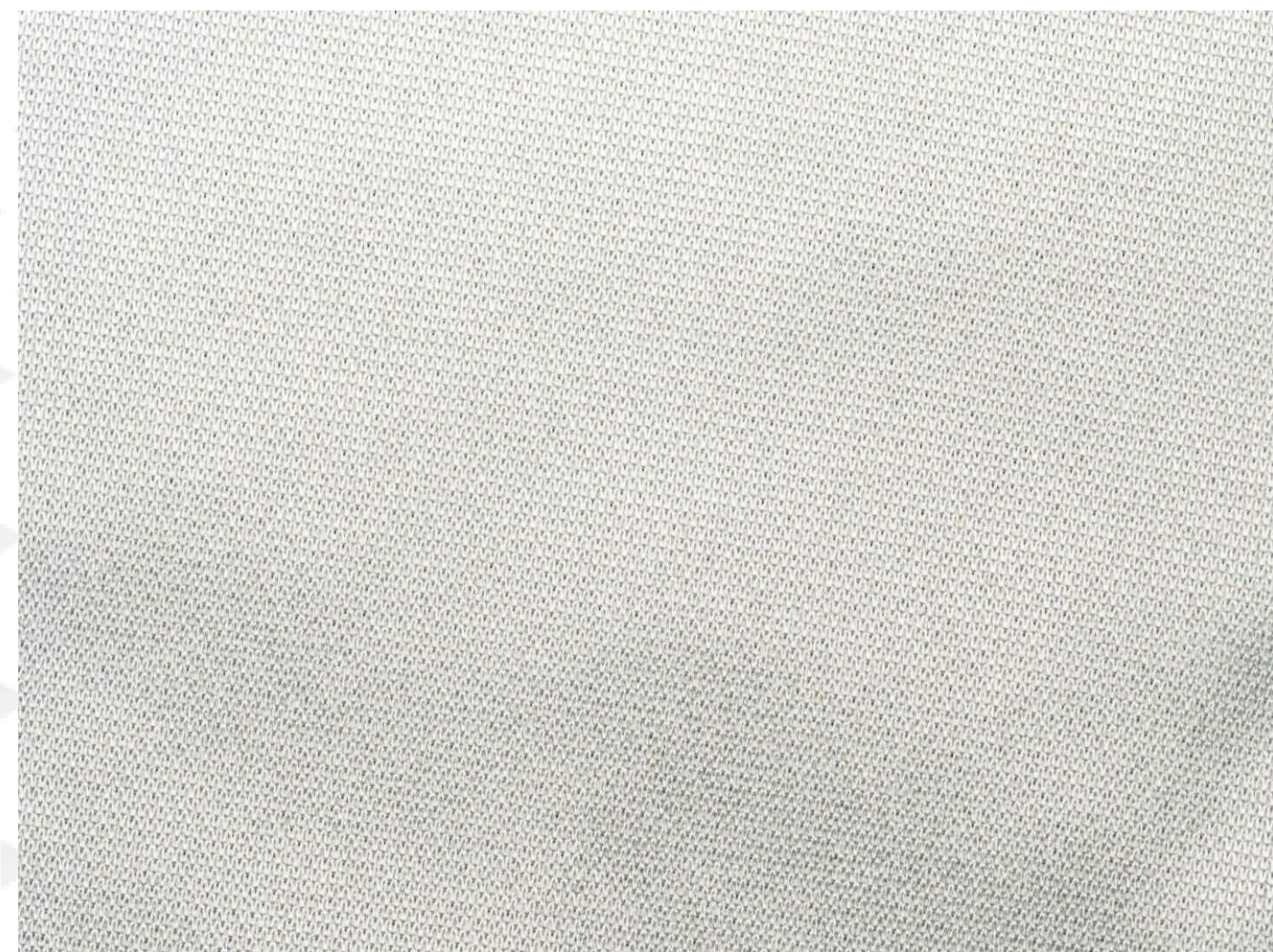
Print Type: **Sublimation**

Weight: **340gsm**

Material Composition: **100% polyester**

Fabric Use:

- **Hoodie**





SKU: SP-032

## Towel Fabric

---

Print Type: **Sublimation**

Weight: **400gsm**

Material Composition: **100% polyester**

Fabric Use:

- **Towels**





SKU: SP-035

## Nitro Mesh

---

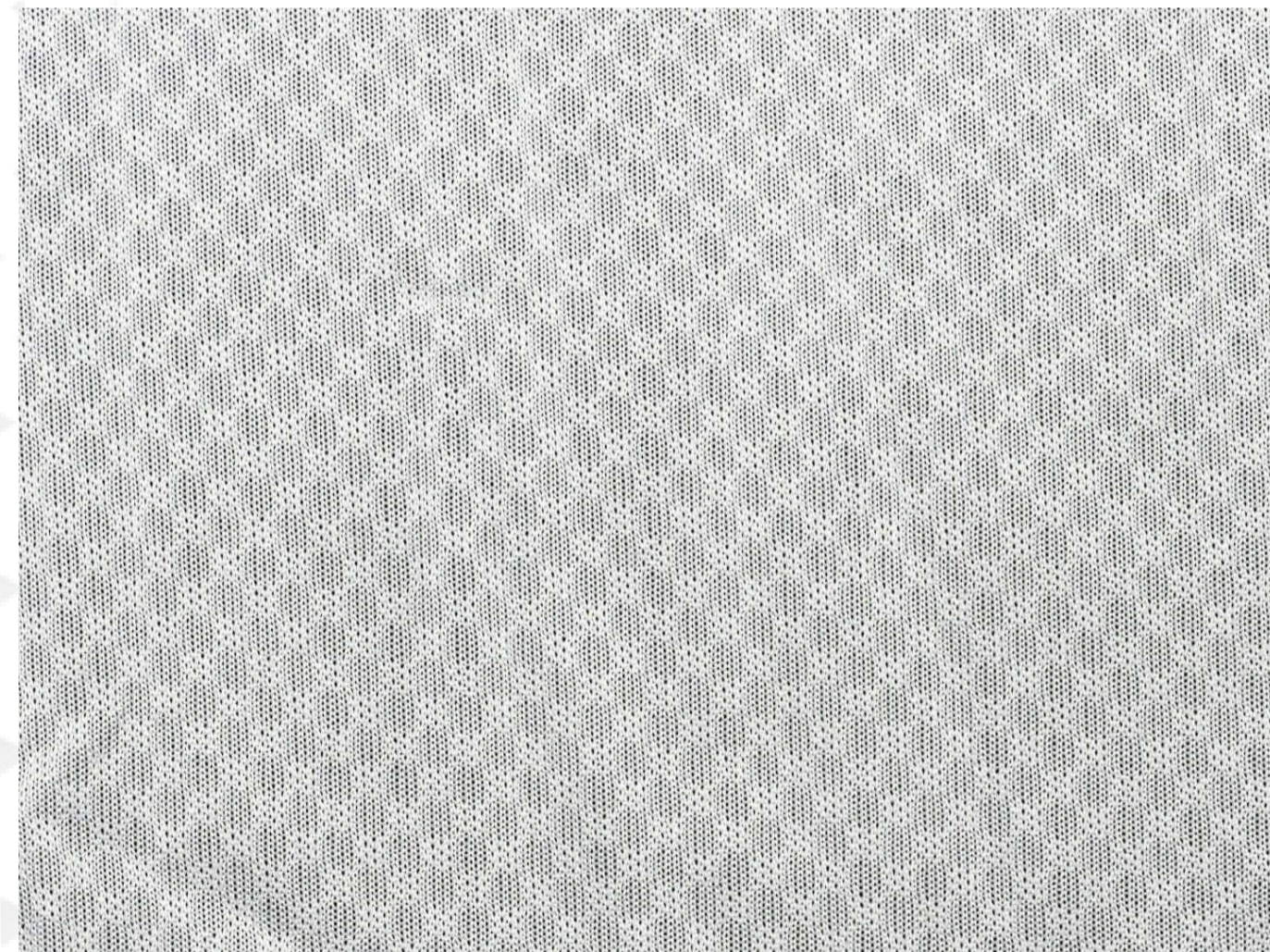
Print Type: **Sublimation**

Weight: **120gsm**

Material Composition: **100% polyester**

Fabric Use:

- Singlet
- T-shirt





SKU: SP-036

## CoolPass Fabric

---

Print Type: **Sublimation**

Weight: **140gsm**

Material Composition: **86% polyester 14% spandex**

Fabric Use:

- **Singlet**
- **T-shirt**
- **Polo**





SKU: SP-044

## Cricket Pants Fabric

---

Print Type: **Sublimation**

Weight: **220gsm**

Material Composition: **100% polyester**

Fabric Use:

- **Cricket Pants**





SKU: SP-050

## Deluxe Hoodie Fabric

---

Print Type: **Sublimation**

Weight: **340gsm**

Material Composition: **87% polyester 13% spandex**

Fabric Use:

- **Hoodie**





SKU: SP-054

## Hawaiian Shirt Woven Cotton Fabric with Digital Printing

---

Print Type: **Sublimation**

Weight: **120gsm**

Material Composition: **100% polyester**

Fabric Use:

- **Hawaiian Shirt**







SKU: SP-055

## 210T Fabric

---

Print Type: **Sublimation**

Weight: **90gsm**

Material Composition: **100% polyester**

Fabric Use:

- Lining
- Drawstring Bag
- Jacket





SKU: SP-057

## Miniwaffle Fabric

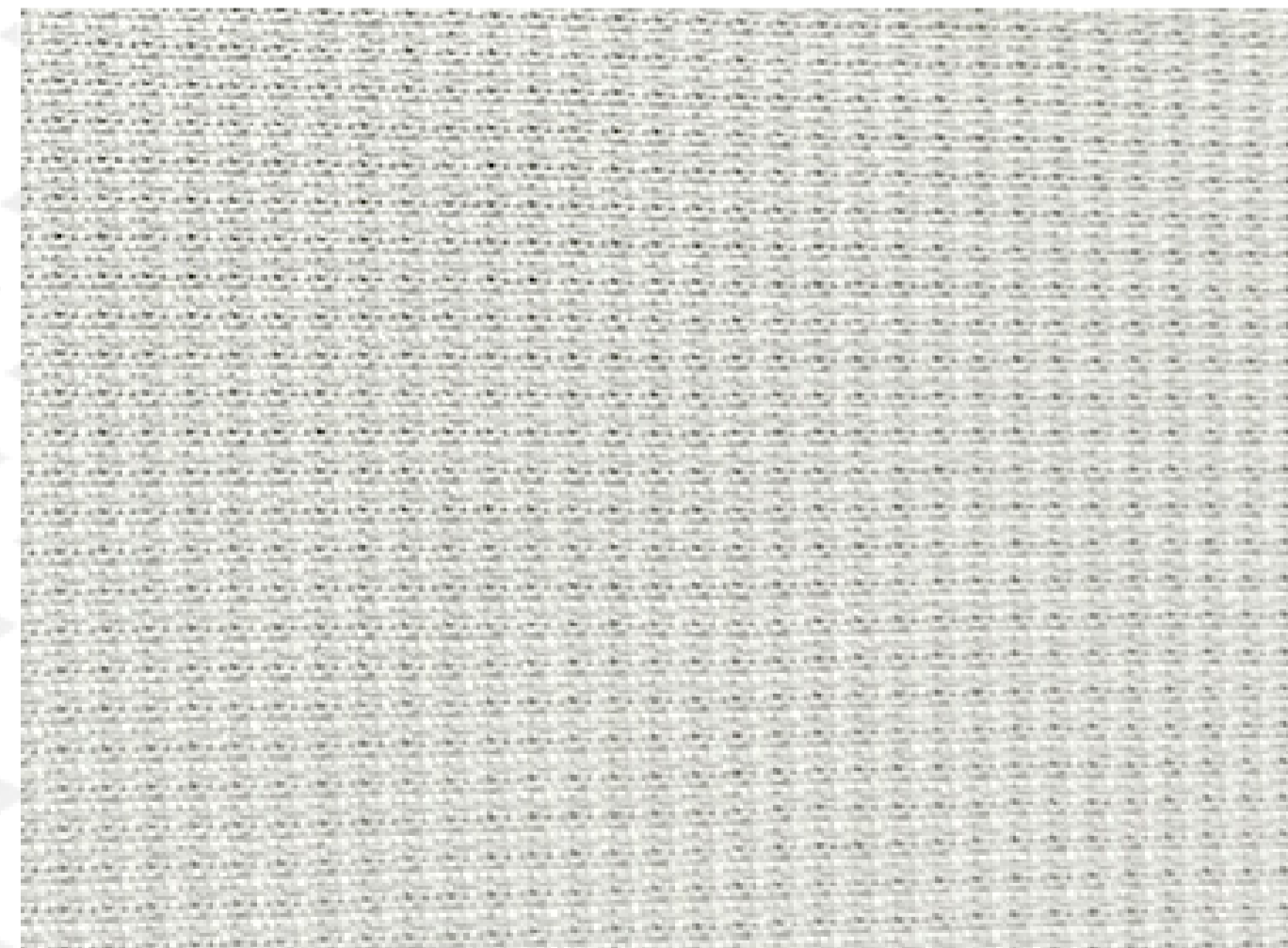
Print Type: **Sublimation**

Weight: **160gsm**

Material Composition: **100% polyester**

Fabric Use:

- Polo
- T-shirt
- Shorts
- Netball Dress



SKU: SP-058

## Exodry / Cooldry Fabric

Print Type: **Sublimation**

Weight: **250gsm**

Material Composition: **95% polyester 5% spandex**

Fabric Use:

- **AFL Guernsey**
- **Rugby Jersey**
- **Jacket**
- **Pants**





SKU: SP-059

## SPF50+ Chlorine Resistant Fabric

Print Type: **Sublimation**

Weight: **220gsm**

Material Composition: **84% polyester 16% spandex**

Fabric Use:

- **Rash Top**
- **Rash Guard**
- **Swimming Wear**





SKU: SP-061

## Stretchy Single Jersey Fabric

Print Type: **Sublimation**

Weight: **150gsm**

Material Composition: **80% polyester 20% spandex**

Fabric Use:

- T-shirt
- Singlet
- Relaxed Pants
- Headwear





SKU: SP-067

## Fila Golf Skirt Fabric

---

Print Type: **Sublimation**

Weight: **280gsm**

Material Composition: **85% polyester 15% spandex**

Fabric Use:

- **Golf Skirt**
- **Golf Skort**
- **Pants**

